

Product datasheet for **TA319364**

Emi1 (FBXO5) Rabbit Polyclonal Antibody

Product data:

Product Type:	Primary Antibodies
Applications:	IHC, WB
Recommended Dilution:	ELISA: 1:5,000 - 1:20,000, WB: 1:500 - 1:3,000, IHC: 1:500 - 1:3,000
Reactivity:	Human
Host:	Rabbit
Isotype:	IgG
Clonality:	Polyclonal
Immunogen:	This affinity purified antibody was prepared from whole rabbit serum produced by repeated immunizations with a synthetic peptide corresponding to a region near the amino terminal end of human Fbp5A protein.
Formulation:	0.02 M Potassium Phosphate, 0.15 M Sodium Chloride, pH 7.2
Concentration:	lot specific
Conjugation:	Unconjugated
Storage:	Store at -20°C as received.
Stability:	Stable for 12 months from date of receipt.
Gene Name:	F-box protein 5
Database Link:	NP_036309 Entrez Gene 26271 Human Q9UKT4
Synonyms:	EMI1; FBX5; Fbxo31



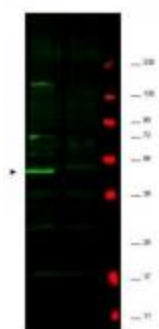
[View online »](#)

Note: Fbp5A is a member of the F-box protein family that is characterized by an approximately 40 amino acid motif, the F-box. The F-box proteins constitute one of the four subunits of the ubiquitin protein ligase complex called SCFs (SKP1-cullin-F-box), which function in phosphorylation-dependent ubiquitination. The F-box proteins are divided into 3 classes: Fbws containing WD-40 domains, Fbls containing leucine-rich repeats, and Fbxs containing either different protein-protein interaction modules or no recognizable motifs. The protein encoded by this gene belongs to the Fbxs class. This protein is similar to *Xenopus* early mitotic inhibitor-1 (Emi1), which is a mitotic regulator that interacts with Cdc20 and inhibits the anaphase-promoting complex.

Protein Families: Druggable Genome

Protein Pathways: Oocyte meiosis

Product images:



WB using Anti-Fbp5A antibody shows detection of a major band corresponding to Fbp5A protein in a human HeLa whole cell lysate (lane 1 arrowhead). The identity of cross-reactive minor bands at ~72 kDa and 150 kDa is unknown. Specific band staining is blocked when the antibody is pre-incubated with the immunizing peptide (lane 2). Primary antibody was used at 1:500. Molecular weight estimation was made by comparison to prestained MW markers indicated at the right (lane M, 700 nm channel, red).



Affinity Purified anti-Fbp5a antibody shows strong cytoplasmic and membranous staining of bile duct cells in human liver tissue. Tissue was formalin-fixed and paraffin embedded. Brown color indicates presence of protein, blue color shows cell nuclei. Personal Communication, Kenneth Wester, www.proteinatlas.org, Uppsala, Sweden.