

## Product datasheet for **TA319363**

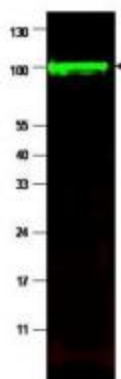
### iASPP (PPP1R13L) Rabbit Polyclonal Antibody

#### Product data:

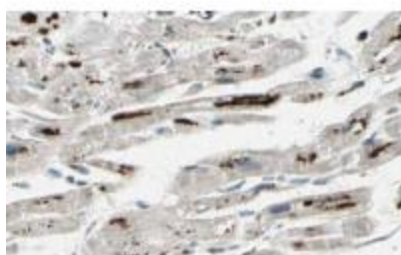
|                       |                                                                                                                                                                                                                                                                                                                                                                                                                                                                                                                                                                                                                                          |
|-----------------------|------------------------------------------------------------------------------------------------------------------------------------------------------------------------------------------------------------------------------------------------------------------------------------------------------------------------------------------------------------------------------------------------------------------------------------------------------------------------------------------------------------------------------------------------------------------------------------------------------------------------------------------|
| Product Type:         | Primary Antibodies                                                                                                                                                                                                                                                                                                                                                                                                                                                                                                                                                                                                                       |
| Applications:         | IHC, WB                                                                                                                                                                                                                                                                                                                                                                                                                                                                                                                                                                                                                                  |
| Recommended Dilution: | ELISA: 1:40,000 - 1:160,000, WB: 1:1,000 - 1:5,000, IHC: 1:1,000 - 1:5,000                                                                                                                                                                                                                                                                                                                                                                                                                                                                                                                                                               |
| Reactivity:           | Human                                                                                                                                                                                                                                                                                                                                                                                                                                                                                                                                                                                                                                    |
| Host:                 | Rabbit                                                                                                                                                                                                                                                                                                                                                                                                                                                                                                                                                                                                                                   |
| Isotype:              | IgG                                                                                                                                                                                                                                                                                                                                                                                                                                                                                                                                                                                                                                      |
| Clonality:            | Polyclonal                                                                                                                                                                                                                                                                                                                                                                                                                                                                                                                                                                                                                               |
| Immunogen:            | This affinity purified antibody was prepared from whole rabbit serum produced by repeated immunizations with a synthetic peptide corresponding to amino acids 780-797 of human iASPP (isoform 1) protein.                                                                                                                                                                                                                                                                                                                                                                                                                                |
| Formulation:          | 0.02 M Potassium Phosphate, 0.15 M Sodium Chloride, pH 7.2                                                                                                                                                                                                                                                                                                                                                                                                                                                                                                                                                                               |
| Concentration:        | lot specific                                                                                                                                                                                                                                                                                                                                                                                                                                                                                                                                                                                                                             |
| Conjugation:          | Unconjugated                                                                                                                                                                                                                                                                                                                                                                                                                                                                                                                                                                                                                             |
| Storage:              | Store at -20°C as received.                                                                                                                                                                                                                                                                                                                                                                                                                                                                                                                                                                                                              |
| Stability:            | Stable for 12 months from date of receipt.                                                                                                                                                                                                                                                                                                                                                                                                                                                                                                                                                                                               |
| Gene Name:            | protein phosphatase 1 regulatory subunit 13 like                                                                                                                                                                                                                                                                                                                                                                                                                                                                                                                                                                                         |
| Database Link:        | <a href="#">NP_001135974</a><br><a href="#">Entrez Gene 10848 Human</a><br><a href="#">Q8WUF5</a>                                                                                                                                                                                                                                                                                                                                                                                                                                                                                                                                        |
| Synonyms:             | IASPP; NKIP1; RAI; RAI4                                                                                                                                                                                                                                                                                                                                                                                                                                                                                                                                                                                                                  |
| Note:                 | ASPP proteins (ASPP1, ASPP2 and iASPP) represent a new family of p53 binding proteins. ASPP1 and ASPP2 bind and enhance p53-mediated apoptosis. In contrast, the third member, iASPP, functionally inactivates p53. iASPP (also called protein phosphatase 1 regulatory (inhibitor) subunit 13 like protein, Inhibitor of ASPP protein, Protein iASPP, PPP1R13B-like protein and NFkB-interacting protein 1) plays a central role in regulation of apoptosis and transcription via its interaction with NF-kappa-B and p53/TP53 proteins. iASPP blocks transcription of HIV-1 virus by inhibiting the action of both NF-kappa-B and SP1. |
| Protein Families:     | Transcription Factors                                                                                                                                                                                                                                                                                                                                                                                                                                                                                                                                                                                                                    |



[View online »](#)

**Product images:**

WB using Anti-iASPP antibody shows detection of a band at ~100 kDa (arrowhead) corresponding to isoform 1 of iASPP in MCF7 whole cell lysates. Preincubation with immunizing peptide blocks specific band staining (data not shown). Approximately 35  $\mu$ g of lysate was separated by SDS-PAGE. After blocking, the membrane was probed with the primary antibody diluted to 1:1,500. The membrane was washed and reacted with a 1:10,000 dilution of IRDye800 conjugated Gt-a-Rabbit IgG [H&L].



Affinity Purified anti-iASPP antibody shows strong cytoplasmic and membranous staining of myocytes in human heart tissue. Tissue was formalin-fixed and paraffin embedded. Brown color indicates presence of protein, blue color shows cell nuclei. Personal Communication, Kenneth Wester, [www.proteinatlas.org](http://www.proteinatlas.org), Uppsala, Sweden.