

## Product datasheet for **TA319359**

### Sprouty 4 (SPRY4) Rabbit Polyclonal Antibody

#### Product data:

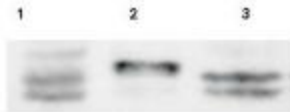
Product Type:	Primary Antibodies
Applications:	IHC, WB
Recommended Dilution:	ELISA: 1:3,000 - 1:12,000, WB: 1:100 - 1:1,000, IHC: 1 ug/ml to 10 ug/ml
Reactivity:	Human, Chimpanzee
Host:	Rabbit
Isotype:	IgG
Clonality:	Polyclonal
Immunogen:	This affinity purified antibody was prepared from whole rabbit serum produced by repeated immunizations with a synthetic peptide corresponding to amino acids 306-322 of Human Sprouty-4 protein.
Formulation:	0.02 M Potassium Phosphate, 0.15 M Sodium Chloride, pH 7.2
Concentration:	lot specific
Conjugation:	Unconjugated
Storage:	Store at -20°C as received.
Stability:	Stable for 12 months from date of receipt.
Gene Name:	sprouty RTK signaling antagonist 4
Database Link:	<a href="#">NP_112226</a> <a href="#">Entrez Gene 81848 Human</a> <a href="#">Q9C004</a>
Synonyms:	HH17
Note:	Sprouty-4 (also known as SPRY4) is an inhibitor of the insulin receptor and EGFR-transduced mitogen-activated protein kinase (MAPK) signaling pathway downstream of FGF and EGF receptor tyrosine kinase activation. It is positioned upstream of RAS activation and impairs the formation of active GTP-RAS. SPRY4 is widely expressed, with different isoforms. The protein consists of 322 amino acids, with a cysteine-rich region, Src homology 3 binding regions, proline-rich regions, and a PEST sequence. It is expressed predominantly in the cytoplasm. Northern results show bands across most tissues, with strongest expression in heart, brain, placenta, lung, and intestine.



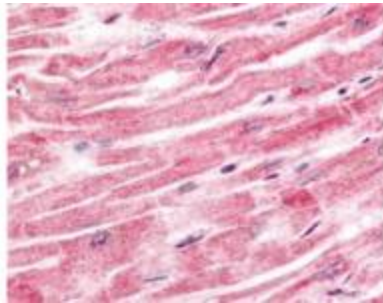
[View online »](#)

Protein Pathways: Jak-STAT signaling pathway

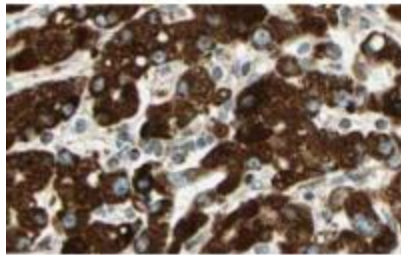
## Product images:



Western Blot of Rabbit anti-Sprouty-4 antibody. Lane 1: HeLa. Lane 2: SW13. Lane 3: C2C12. Load: 30 ug per lane. Primary antibody: Sprouty 4 antibody at 1:100 for overnight at 4°C. Secondary antibody: IRDye800™ rabbit secondary antibody at 1:5,000 for 45 min at RT. Block: 5% BLOTTO overnight at 4°C. Predicted/Observed size: a doublet band ~35 kDa corresponding to human Sprouty-4. Other band (s): none.



Immunohistochemistry of Rabbit anti-Sprouty-4 antibody. Tissue: human heart tissue. Fixation: formalin fixed paraffin embedded. Antigen retrieval: not required. Primary antibody: Sprouty-4 antibody at 2.5 ug/ml for 1 h at RT. Secondary antibody: Peroxidase rabbit secondary antibody at 1:10,000 for 45 min at RT. Localization: Sprouty-4 is cytoplasmic. Staining: Sprouty-4 as precipitated red signal with hematoxylin purple nuclear counterstain.



Immunohistochemistry of Rabbit anti-Sprouty-4 antibody. Tissue: human liver tissue. Fixation: formalin fixed paraffin embedded. Antigen retrieval: not required. Primary antibody: Sprouty-4 antibody at 2.5 ug/mL for 1 h at RT. Secondary antibody: Peroxidase rabbit secondary antibody at 1:10,000 for 45 min at RT. Localization: Sprouty-4 is cytoplasmic. Staining: Sprouty-4 as precipitated brown with blue nuclear counterstain.