

Product datasheet for **TA319358**

SMARCAL1 Rabbit Polyclonal Antibody

Product data:

Product Type:	Primary Antibodies
Applications:	WB
Recommended Dilution:	ELISA: 1:16,000 - 1:64,000, WB: 1:500 - 1:3,000
Reactivity:	Human
Host:	Rabbit
Isotype:	IgG
Clonality:	Polyclonal
Immunogen:	This affinity purified antibody was prepared from whole rabbit serum produced by repeated immunizations with a synthetic peptide corresponding aa 80-96 of human SmarcAL1 protein.
Formulation:	0.02 M Potassium Phosphate, 0.15 M Sodium Chloride, pH 7.2
Concentration:	lot specific
Conjugation:	Unconjugated
Storage:	Store at -20°C as received.
Stability:	Stable for 12 months from date of receipt.
Gene Name:	SWI/SNF related, matrix associated, actin dependent regulator of chromatin, subfamily a like 1
Database Link:	NP_054859 Entrez Gene 50485 Human Q9NZC9
Synonyms:	HARP; HHARP

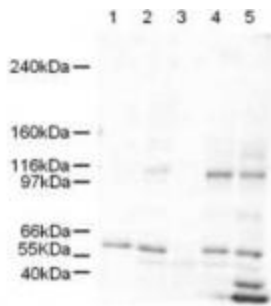


[View online »](#)

Note: SmarcAL1 (SWI/SNF-related matrix-associated actin-dependent regulator of chromatin a-like 1) is also known as HARP, HepA Related Protein, HHARP, SMARCA like Protein 1 and SWI/SNF Related. SmarcAL1 is a member of the SWI/SNF family of proteins. Members of this family have helicase and ATPase activities and are thought to regulate transcription of certain genes by altering the chromatin structure around those genes. The encoded protein shows sequence similarity to the E. coli RNA polymerase-binding protein HepA. Mutations in this gene are a cause of Schimke immunosseous dysplasia (SIOD), an autosomal recessive disorder with the diagnostic features of spondyloepiphyseal dysplasia, renal dysfunction, and T-cell immunodeficiency.

Protein Families: Druggable Genome

Product images:



WB using Anti-SmarcAL1 antibody shows detection of a band ~106 kDa band (arrowhead) corresponding to SmarcAL1 in human derived cultured cell lysates (HeLa nuclear extract lane 1, HeLa lane 2, A431 lane 3, Jurkat lane 4, and 293 lane 5). Approximately 5ug of each lysates was run on a SDS-PAGE and transferred onto nitrocellulose followed by reaction with a 1:500 dilution of anti-SmarcAL1 antibody. SmarcAL1 is the band seen between the 97 and 116kD markers.