

## Product datasheet for **TA319345**

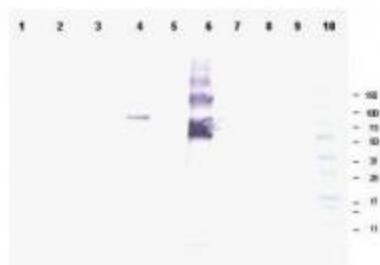
### Ankrd26 Rabbit Polyclonal Antibody

#### Product data:

Product Type:	Primary Antibodies
Applications:	WB
Recommended Dilution:	ELISA: 1:20,000 - 1:80,000, WB: 1:500 - 1:3,000
Reactivity:	Mouse
Host:	Rabbit
Isotype:	IgG
Clonality:	Polyclonal
Immunogen:	This affinity purified antibody was prepared from whole rabbit serum produced by repeated immunizations with a synthetic peptide corresponding to amino acids 1-15 of mouse Ankrd26 protein.
Formulation:	0.02 M Potassium Phosphate, 0.15 M Sodium Chloride, pH 7.2
Concentration:	lot specific
Conjugation:	Unconjugated
Storage:	Store at -20°C as received.
Stability:	Stable for 12 months from date of receipt.
Gene Name:	ankyrin repeat domain 26
Database Link:	<a href="#">NP_001074581</a> <a href="#">Entrez Gene 232339 Mouse</a>
Synonyms:	bA145E8.1; KIAA1074; MGC163325
Note:	This antibody is suitable for Cancer, Immunology and Nuclear Signaling research. POTE gene is expressed in prostate and breast cancer and a potential candidate for immuno-therapy. It is also expressed in undifferentiated embryonic stem (ES) cells. ANKRD-26 is the ancestral gene of POTE and has a homologue in mouse. Mouse Ankrd26 is also selectively expressed in ES cells and various cancers but not in other adult tissues. The encoded protein of Ankrd26 contains ankyrin repeats and coiled coil domain of spectrin suggestive of a signaling molecule.



[View online »](#)

**Product images:**

WB using Anti-Ankrd26 antibody shows detection of a band at ~81 kDa corresponding to mouse Ankrd26 protein. Lane 1 Blank, Lane 2 MES cell lysate - 80 ug, Lane 3 MES cell lysate - 40 ug, Lane 4 293T-ANKRD26 transfected cell lysate - 20 ug, Lane 5 control 293T cell lysate - 20 ug, Lane 6 BSA-ANKRD26 conjugate 20 ng, Lane 7 BSA - 500 ng, Lane 8 BSA - 100 ng, Lane 9 BSA 20 ng and Lane 10 Protein standards. Primary antibody diluted to 1:1,000 and ALP conjugated Gt-a-Rabbit IgG at 1:3,000.