

Product datasheet for **TA319344**

PACRG Rabbit Polyclonal Antibody

Product data:

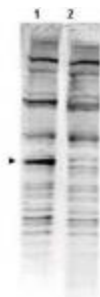
Product Type:	Primary Antibodies
Applications:	WB
Recommended Dilution:	ELISA: 1:2,000 - 1:10,000, WB: 1:500 - 1:3,000
Reactivity:	Human, Mouse, Chicken
Host:	Rabbit
Isotype:	IgG
Clonality:	Polyclonal
Immunogen:	This affinity purified antibody was prepared from whole rabbit serum produced by repeated immunizations with a synthetic peptide corresponding to amino acids 204-215 of Human PACRG protein.
Formulation:	0.02 M Potassium Phosphate, 0.15 M Sodium Chloride, pH 7.2
Concentration:	lot specific
Conjugation:	Unconjugated
Storage:	Store at -20°C as received.
Stability:	Stable for 12 months from date of receipt.
Gene Name:	PARK2 coregulated
Database Link:	NP_689623 Entrez Gene 69310 Mouse Entrez Gene 135138 Human Q96M98
Synonyms:	GLUP; HAK005771; PARK2CRG
Note:	PACRG (also known as Parkin coregulated gene protein and PARK2 coregulated) is a gene located very close to parkin, in reverse orientation on the chromosome. It is thought to be co-transcribed with parkin by a bi-directional promoter between the two genes. PACRG is expressed in all immune tissues, spleen, lymph nodes, thymus, tonsils, leukocyte and bone marrow and is also expressed in heart, brain, skeletal muscle, kidney, lung and pancreas. PACRG is expressed in primary Schwann cells and very weakly by monocyte-derived macrophages, which are the primary host cells of Mycobacterium leprae, the causative agent of leprosy. Splice variants have been described for this protein.



[View online »](#)

Protein Families: Druggable Genome

Product images:



WB using Anti-PACRG antibody shows detection of a band ~40 kDa corresponding to human PACRG (arrowhead lane 1). Specific reactivity with this band is blocked when the antibody is pre-incubated with the immunizing peptide (lane 2). The primary antibody diluted to 1:1, 500 for 2h at RT followed by washes and reaction with a 1:10,000 dilution of IRDye800 conjugated Gt-a-Rabbit IgG [H&L] MX for 45 min at room temperature.