

## Product datasheet for **TA319341**

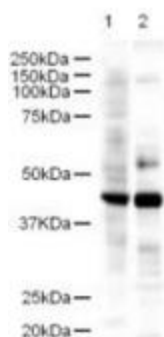
### Ldb2 Rabbit Polyclonal Antibody

#### Product data:

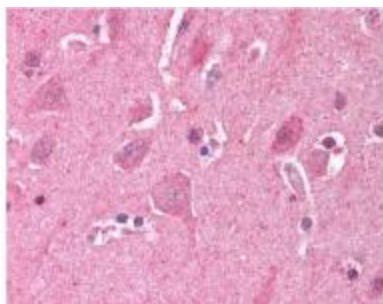
Product Type:	Primary Antibodies
Applications:	IHC, WB
Recommended Dilution:	ELISA: 1:5,000 - 1:20,000, WB: 1:500 - 1:2,000
Reactivity:	Mouse, Human, Chimpanzee, Dog, Rat, Chicken
Host:	Rabbit
Isotype:	IgG
Clonality:	Polyclonal
Immunogen:	This affinity purified antibody was prepared from whole rabbit serum produced by repeated immunizations with a synthetic peptide corresponding to aa 107-120 of Mouse LDB2.
Formulation:	0.02 M Potassium Phosphate, 0.15 M Sodium Chloride, pH 7.2
Concentration:	lot specific
Conjugation:	Unconjugated
Storage:	Store at -20°C as received.
Stability:	Stable for 12 months from date of receipt.
Gene Name:	LIM domain binding 2
Database Link:	<a href="#">NP_034828</a> <a href="#">Entrez Gene 9079 HumanEntrez Gene 289664 RatEntrez Gene 479084 DogEntrez Gene 16826 Mouse O55203</a>
Synonyms:	CLIM-1; CLIM1; LDB1
Note:	LDB2 (LIM homeobox protein cofactor CLIM-1a). It is suggested that LIM domain binding proteins (LDB1, LDB2 and LDB3) act synergistically to enhance transcriptional efficiency by acting as co-factors for LIM homeodomain and Otx class transcription factors both of which have essential roles in development. LDB2 is a close homologue of LDB1. LDBs are homologs of the Drosophila Chip protein. Three members of the Ldb gene family (Ldb1, Ldb2 and Ldb3) from the zebrafish, Danio rerio, share 95%, 73% and 62% amino acid identity with mouse Ldb1, respectively.



[View online »](#)

**Product images:**

WB using Anti-LDB2 antibody shows detection of a 43-kDa band corresponding to LDB2 in a lysates prepared from human kidney (lane 1) and mouse spleen (lane 2) tissues. Approximately 18 ug of lysate was run on a SDS-PAGE and transferred onto nitrocellulose followed by reaction with a 1:500 dilution of anti-LDB2 antibody. Detection occurred using a 1:5,000 dilution of HRP-labeled Goat anti-Rabbit IgG for 1 hour at room temperature.



Affinity Purified anti-LDB2 (Clim1) antibody was used at a 5 ug/ml to detect LDB2 in human brain cortex tissue. The image shows the localization of antibody as the precipitated red signal, with a hematoxylin purple nuclear counter stain. Tissue was formalin-fixed and paraffin embedded.