

Product datasheet for **TA319337**

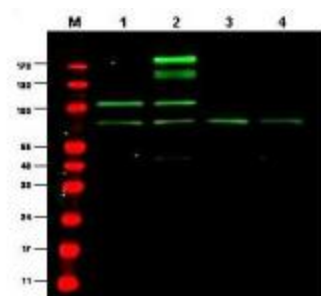
Rreb1 Rabbit Polyclonal Antibody

Product data:

Product Type:	Primary Antibodies
Applications:	WB
Recommended Dilution:	ELISA: 1:2,000 - 1:15,000, WB: 1:500 - 1:2,000
Reactivity:	Mouse
Host:	Rabbit
Isotype:	IgG
Clonality:	Polyclonal
Immunogen:	Anti-RREB1 antibody was prepared from whole rabbit serum produced by repeated immunizations with a recombinant protein corresponding to mouse RREB1 protein.
Formulation:	0.02 M Potassium Phosphate, 0.15 M Sodium Chloride, pH 7.2
Concentration:	lot specific
Conjugation:	Unconjugated
Storage:	Store at -20°C as received.
Stability:	Stable for 12 months from date of receipt.
Gene Name:	ras responsive element binding protein 1
Database Link:	NP_081106 Entrez Gene 68750 Mouse Q3UH06
Synonyms:	FINB; HNT; LZ321; RREB-1; Zep-1
Note:	RREB1 (also known as RAS-responsive element binding protein 1 and Raf responsive zinc finger protein) is a transcription factor that binds specifically to the distal RAS-responsive element (RRE) in



[View online »](#)

Product images:

WB using anti-RREB1 antibody shows detection of a predominant band believed to be RREB1 in various cell lysates (1 - HEK293, 2 - RFP-RREB transfected HEK293, 3 - M460 and 4 - T1165). All lysates were loaded at 20 μ g per lane and separated by SDS-PAGE. After transfer to nitrocellulose, the membrane was probed with the primary antibody diluted to 1:1,000. The membrane was washed and reacted with IRDye800 conjugated Gt-a-Rabbit IgG [H&L] MX.