

## Product datasheet for **TA319331**

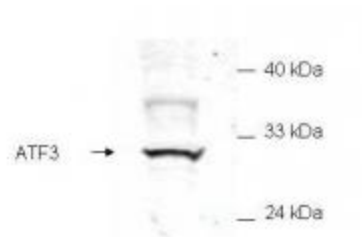
### ATF3 Rabbit Polyclonal Antibody

#### Product data:

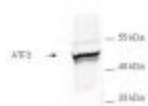
|                       |  |
|-----------------------|--|
| Product Type:         | Primary Antibodies   |
| Applications:         | WB   |
| Recommended Dilution: | ELISA: 1:5,000 - 1:20,000, WB: 1:200 - 1:2000  |
| Reactivity:           | Human  |
| Host:                 | Rabbit   |
| Isotype:              | IgG  |
| Clonality:            | Polyclonal   |
| Immunogen:            | This antibody was produced from a synthetic peptide corresponding to aa 113-130 of human ATF3.   |
| Formulation:          | 0.02 M Potassium Phosphate, 0.15 M Sodium Chloride, pH 7.2   |
| Concentration:        | lot specific   |
| Conjugation:          | Unconjugated   |
| Storage:              | Store at -20°C as received.  |
| Stability:            | Stable for 12 months from date of receipt.   |
| Gene Name:            | activating transcription factor 3  |
| Database Link:        | <a href="#">NP_001025458</a><br><a href="#">Entrez Gene 467 Human</a><br><a href="#">P18847</a>  |
| Synonyms:             | FLJ41705   |
| Note:                 | ATF3, or Activating Transcription Factor 3, is a member of mammalian activation TF/CREB protein family of transcription factors. ATF3 binds the cAMP response element (cre) (consensus: 5'-gtgacgt[ac][ag]-3'), a sequence present in many viral and cellular promoters. However, ATF3 represses rather than activates transcription from promoters with ATF sites stabilizing inhibitory co-factors at the promoter. Alternate splicing forms of ATF3, called ATF3 delta Zip, lack the leucine zipper domain and do not bind DNA. ATF3 delta Zip stimulates transcription, presumably by sequestering inhibitory co-factors away from the promoter. Human ATF3 (SwissProt 18847) is a 20575 Da protein composed of 181 amino acids. |
| Protein Families:     | Transcription Factors  |



[View online »](#)

**Product images:**

WB of mammalian whole cell extract transfected with HA epitope tagged human ATF3. Anti-ATF3 detects a band ~31 kDa corresponding to recombinant human ATF3. The membrane was probed with the primary antibody diluted 1:200 in 0.2X blocking buffer in PBS overnight at 4°C. Reaction was followed by washes and reaction with a 1:5000 dilution of IRDye™800 conjugated Gt-a-Rabbit IgG [H&L] for 30 min at room temperature.



WB of E.coli whole cell extract transfected with GST epitope tagged human ATF3. Anti-ATF3 detects a band ~48 kDa corresponding to recombinant human ATF3. The protein was transferred to nitrocellulose using standard methods. After blocking with 5% goat serum and 0.5% non fat milk in PBS, the membrane was probed with the primary antibody diluted 1:200 in 0.2X blocking buffer in PBS overnight at 4°C. Reaction was followed by washes and reaction with