

Product datasheet for **TA319330**

gamma Adaptin (AP1G1) Goat Polyclonal Antibody

Product data:

Product Type:	Primary Antibodies
Applications:	WB
Recommended Dilution:	ELISA: 1:2,000 - 1:8,000, WB: 1:500 - 1:2,000, IP: 1:100
Reactivity:	Human
Host:	Goat
Clonality:	Polyclonal
Immunogen:	This affinity purified antibody was prepared from whole goat serum produced by repeated immunizations with a synthetic peptide corresponding aa 646-659 of Human AP1G1.
Formulation:	0.02 M Potassium Phosphate, 0.15 M Sodium Chloride, pH 7.2
Concentration:	lot specific
Conjugation:	Unconjugated
Storage:	Store at -20°C as received.
Stability:	Stable for 12 months from date of receipt.
Gene Name:	adaptor related protein complex 1 gamma 1 subunit
Database Link:	NP_001025178 Entrez Gene 164 Human O43747
Synonyms:	ADTG; CLAPG1

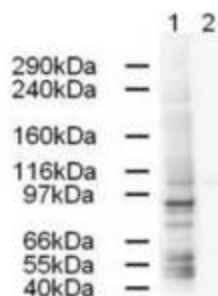


[View online »](#)

Note: AP1G1 (also known as gamma 1 subunit of adaptor -related protein complex 1, Gamma-adaptin, Adaptor protein complex AP-1 gamma-1 subunit, Golgi adaptor HA1/AP1 adaptin gamma-1 subunit and Clathrin assembly protein complex 1 gamma-1 large chain) is a subunit of clathrin-associated adaptor protein complex 1 that plays a role in protein sorting in the late-Golgi/trans-Golgi network (TGN) and/or endosomes. The AP complexes mediate both the recruitment of clathrin to membranes and the recognition of sorting signals within the cytosolic tails of transmembrane cargo molecules. The adaptin family of proteins is composed of four classes of molecules named alpha, beta-, beta prime- and gamma-adaptins. Adaptins, together with medium and small subunits, form a heterotetrameric complex called an adaptor, whose role is to promote the formation of clathrin-coated pits and vesicles. AP1G1 is localized to the coat surrounding the cytoplasmic face of coated vesicles located at the Golgi complex and is widely expressed.

Protein Pathways: Lysosome

Product images:



WB using Anti-AP1G1 antibody shows strong detection of a 91-kDa band corresponding to Human AP1G1 in a HeLa whole cell lysate (lane 1). Peptide competition (using 1 ug/ml of the immunizing peptide) blocks the specific reactivity of this antibody with AP1G1 (lane 2). Approximately 20 ug of each lysate. Primary antibody was used at 1:500. Detection occurred using a 1:5,000 dilution of HRP-labeled Rabbit anti-Goat IgG.