

Product datasheet for **TA319326**

RFFL Rabbit Polyclonal Antibody

Product data:

Product Type:	Primary Antibodies
Applications:	IHC, WB
Recommended Dilution:	ELISA: 1:4,000 - 1:20,000, WB: 1:500 - 1:3,000, IHC: 1:500 - 1:3,000
Reactivity:	Human
Host:	Rabbit
Isotype:	IgG
Clonality:	Polyclonal
Immunogen:	This affinity purified antibody was prepared from whole rabbit serum produced by repeated immunizations with a recombinant protein corresponding to amino acids 1-363 of human RFFL protein.
Formulation:	0.02 M Potassium Phosphate, 0.15 M Sodium Chloride, pH 7.2
Concentration:	lot specific
Conjugation:	Unconjugated
Storage:	Store at -20°C as received.
Stability:	Stable for 12 months from date of receipt.
Gene Name:	ring finger and FYVE-like domain containing E3 ubiquitin protein ligase
Database Link:	NP_476519 Entrez Gene 117584 Human Q8WZ73
Synonyms:	CARP2; fring; FYVE-RING finger protein SAKURA; RIFIFYLIN; ring finger and FYVE-like domain containing 1; RNF34L; RNF189

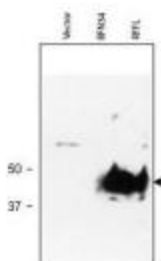


[View online »](#)

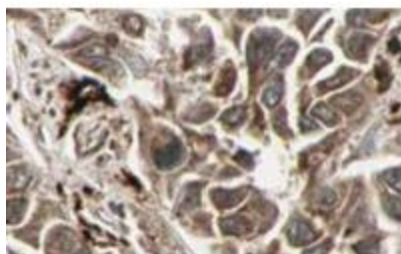
Note: This antibody is suitable for Cancer, Immunology and Nuclear Signaling research. RFFL, also known as Rififylin, RING finger and FYVE-like domain-containing protein 1, FYVE-RING finger protein, Sakura, Fring, Caspases-8 and -10-associated RING finger protein 2, CARP-2, Caspase regulator CARP2, RING finger protein 189 and RING finger protein 34-like, is a novel modulator of NF- κ B activation. RFFL possesses E3 ubiquitin protein ligase activity and has been shown to regulate the levels of CASP8 and CASP10 by targeting them for proteasomal degradation. RFFL also possesses anti-apoptotic activity and may bind phosphatidylinositol phosphates. RFFL is a membrane bound cytoplasmic protein that is expressed ubiquitously. RFFL can be detected in spleen, thymus, prostate, testis, ovary, small intestine, colon and peripheral blood leukocytes and is rapidly degraded after stimulation with TNFSF10, and probably by caspases. Multiple transcript variants have been detected for this protein.

Protein Families: Druggable Genome

Product images:



WB using anti-RFFL antibody shows detection of RFFL (arrowhead) in lysate. Lanes correspond to empty vector 293T cell lysate (mock, left); RNF34 transfected lysate (middle) and RFFL transfected lysate (right), are shown using 20 μ l of lysate per lane. Lysates were prepared from equivalent numbers of cells. Data presented demonstrate that this reagent is specific for RFFL. Primary antibody was used at a 1:1,000 dilution.



Affinity Purified anti-RFFL antibody shows strong cytoplasmic and membranous staining of tumor cells in cancerous human liver tissue. Tissue was formalin-fixed and paraffin embedded. Brown color indicates presence of protein, blue color shows cell nuclei. Personal Communication, Kenneth Wester, www.proteinatlas.org, Uppsala, Sweden.