

## Product datasheet for **TA319323**

### ErbB 3 (ERBB3) Rabbit Polyclonal Antibody

#### Product data:

Product Type:	Primary Antibodies
Applications:	WB
Recommended Dilution:	ELISA: 1:10,000 - 1:50,000, WB: 1:500- 1:2,000, IP: Use 5 uL antibody.
Reactivity:	Human
Host:	Rabbit
Isotype:	IgG
Clonality:	Polyclonal
Immunogen:	Anti-HER3 whole rabbit serum was prepared by repeated immunizations with a HER3 fusion protein corresponding to amino acids 1283 to 1323 (40 amino acids) at the carboxy-terminus of human HER3.
Formulation:	0.02 M Potassium Phosphate, 0.15 M Sodium Chloride, pH 7.2
Concentration:	lot specific
Conjugation:	Unconjugated
Storage:	Store at -20°C as received.
Stability:	Stable for 12 months from date of receipt.
Gene Name:	erb-b2 receptor tyrosine kinase 3
Database Link:	<a href="#">NP_001005915</a> <a href="#">Entrez Gene 2065 Human</a> <a href="#">P21860</a>
Synonyms:	c-erbB-3; c-erbB3; ErbB-3; erbB3-S; HER3; LCCS2; MDA-BF-1; p45-sErbB3; p85-sErbB3; p180-ErbB3



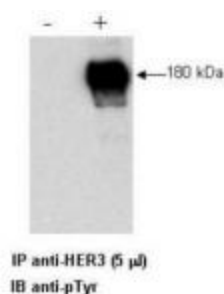
[View online »](#)

**Note:** The human Epidermal Growth Factor Receptor (EGFR) family is a family of receptor tyrosine kinases consisting of 4 members: EGFR, HER2, HER3 and HER4. These receptors are expressed on a wide variety of tissue types and have been implicated in many human cancers, including breast, gastric, colon and prostate. Strong expression of both HER3 and HER2 (also known as p185neu) by tumor cells can be associated with poor outcome for patients. The ligand for HER3 and HER4 is called Neu Differentiation Factor (NDF) or Heregulin. In some instances, antibodies against these receptors prove effective in combination therapy regimens for treatment of the disease. Signaling through the EGFR family involves the combinatorial dimerization of the four known family members and is mediated by at least 8 different hormones, including EGF and the heregulins. Heregulin binding and tyrosine phosphorylation by HER3 or HER4 is enhanced in the presence of HER2. Structurally the members of the EGFR family are 1210 to 1342 amino acids in length with approximately 650 amino acids of the extracellular domain being heavily glycosylated. The extracellular domains show up to 70% sequence homology.

**Protein Families:** Adult stem cells, Druggable Genome, Protein Kinase, Secreted Protein, Stem cell - Pluripotency, Transmembrane

**Protein Pathways:** Calcium signaling pathway, Endocytosis, ErbB signaling pathway

### Product images:



CoIP and WB of a human cell lysate using anti-HER3 antibody. Lysates were prepared from a human LNCap prostate cell line both with (+) treatment with Heregulin-b1 for 15' at 100 ng/ml and without (-) the addition of Heregulin-b1. The combination of IP and WBting was performing using 5 µl of the anti-HER3 antibody for IP followed by WB detection using an anti-phosphotyrosine antibody. Visualization occurred using an ECL system. Film exposure approximately 1'.