

Product datasheet for **TA319311**

Fibrinogen alpha chain (FGA) Goat Polyclonal Antibody

Product data:

Product Type:	Primary Antibodies
Applications:	IHC, WB
Recommended Dilution:	ELISA: 1:20,000 - 1:100,000, WB: 1:2,000 - 1:10,000
Reactivity:	Human
Host:	Goat
Clonality:	Polyclonal
Immunogen:	Fibrinogen [Human Plasma]
Formulation:	0.02 M Potassium Phosphate, 0.15 M Sodium Chloride, pH 7.2
Conjugation:	Unconjugated
Storage:	Store at -20°C as received.
Stability:	Stable for 12 months from date of receipt.
Gene Name:	fibrinogen alpha chain
Database Link:	NP_000499 Entrez Gene 2243 Human P02671
Synonyms:	Fib2

Note: Fibrinogen (factor I) is a soluble plasma glycoprotein, synthesised by the liver, that is converted by thrombin into fibrin during blood coagulation. This is achieved through processes in the coagulation cascade that activate the zymogen prothrombin to the serine protease thrombin, which is responsible for converting fibrinogen into fibrin. Fibrin is then cross linked by factor XIII to form a clot. FXIIIa stabilizes fibrin further by incorporation of the fibrinolysis inhibitors alpha-2-antiplasmin and TAFI (thrombin activatable fibrinolysis inhibitor, procarboxypeptidase B), and binding to several adhesive proteins of various cells. Both the activation of Factor XIII by thrombin and plasminogen activator (t-PA) are catalyzed by fibrin. Fibrin specifically binds the activated coagulation factors factor Xa and thrombin and entraps them in the network of fibers, thus functioning as a temporary inhibitor of these enzymes, which stay active and can be released during fibrinolysis. Recent research has shown that fibrin plays a key role in the inflammatory response. Anti-Fibrinogen (Human Plasma) is ideal for Serum Protein Component research.

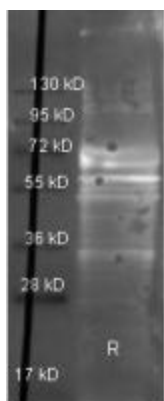


[View online »](#)

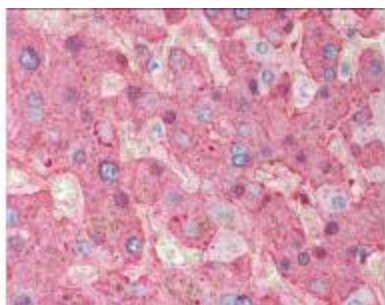
Protein Families: Druggable Genome, Secreted Protein

Protein Pathways: Complement and coagulation cascades

Product images:



Western Blot of Goat anti-Fibrinogen antibody. Lane 1: Fibrinogen under reducing conditions. Lane 2: none. Load: 1 ug per lane. Primary antibody: Fibrinogen antibody at 1:3000 for overnight at 4°C. Secondary antibody: Dylight 488 conjugated Donkey anti goat secondary antibody at 1:10,000 for 45 min at RT. Block: TBS/MB-070 1 hr RT.



Immunohistochemistry of Goat Anti-Fibrinogen antibody. Tissue: human liver tissue. Fixation: formalin fixed paraffin embedded. Antigen retrieval: not required. Primary antibody: Fibrinogen antibody at 1:500 for 1 h at RT. Secondary antibody: Peroxidase goat secondary antibody at 1:10,000 for 45 min at RT. Localization: Fibrinogen is localized in plasma. Staining: Fibrinogen as precipitated red signal with hematoxylin purple nuclear counterstain.