

## Product datasheet for **TA319310**

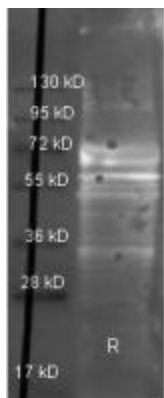
### Fibrinogen alpha chain (FGA) Goat Polyclonal Antibody

#### Product data:

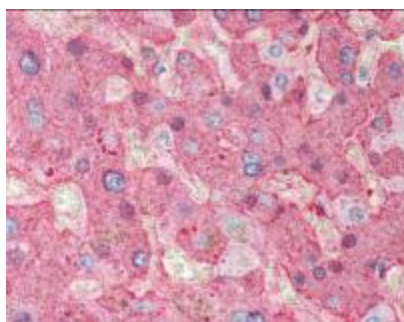
Product Type:	Primary Antibodies
Applications:	IHC, WB
Recommended Dilution:	ELISA: 1:20,000 - 1:100,000, WB: 1:2,000 - 1:10,000
Reactivity:	Human
Host:	Goat
Clonality:	Polyclonal
Immunogen:	Fibrinogen [Human Plasma]
Formulation:	0.02 M Potassium Phosphate, 0.15 M Sodium Chloride, pH 7.2
Concentration:	lot specific
Conjugation:	Unconjugated
Storage:	Store at -20°C as received.
Stability:	Stable for 12 months from date of receipt.
Gene Name:	fibrinogen alpha chain
Database Link:	<a href="#">NP_000499</a> <a href="#">Entrez Gene 2243 Human P02671</a>
Synonyms:	Fib2
Protein Families:	Druggable Genome, Secreted Protein
Protein Pathways:	Complement and coagulation cascades



[View online »](#)

**Product images:**

Western Blot of Goat anti-Fibrinogen antibody. Lane 1: Fibrinogen under reducing conditions. Lane 2: none. Load: 1 ug per lane. Primary antibody: Fibrinogen antibody at 1:3000 for overnight at 4°C. Secondary antibody: Dylight 488 conjugated Donkey anti goat secondary antibody at 1:10,000 for 45 min at RT. Block: TBS/MB-070 1 hr RT.



Immunohistochemistry of Goat Anti-Fibrinogen antibody. Tissue: human liver tissue. Fixation: formalin fixed paraffin embedded. Antigen retrieval: not required. Primary antibody: Fibrinogen antibody at 1:500 for 1 h at RT. Secondary antibody: Peroxidase goat secondary antibody at 1:10,000 for 45 min at RT. Localization: Fibrinogen is localized in plasma. Staining: Fibrinogen as precipitated red signal with hematoxylin purple nuclear counterstain.