

## Product datasheet for **TA319308**

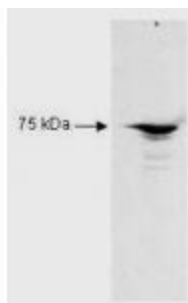
### RFX5 Rabbit Polyclonal Antibody

#### Product data:

Product Type:	Primary Antibodies
Applications:	WB
Recommended Dilution:	ELISA: 1:5,000 - 1:25,000, WB: 1:1,000, ChIP: User Optimized, Gel Shift: 0.5 uL to 1.0 uL
Reactivity:	Human
Host:	Rabbit
Isotype:	IgG
Clonality:	Polyclonal
Immunogen:	RFX5 peptide corresponding to a region at amino acids 320 to 494 of the human protein conjugated to Keyhole Limpet Hemocyanin (KLH).
Formulation:	0.02 M Potassium Phosphate, 0.15 M Sodium Chloride, pH 7.2
Concentration:	lot specific
Conjugation:	Unconjugated
Storage:	Store at -20°C as received.
Stability:	Stable for 12 months from date of receipt.
Gene Name:	regulatory factor X5
Database Link:	<a href="#">NP_000440</a> <a href="#">Entrez Gene 5993 Human</a> <a href="#">P48382</a>
Synonyms:	5; 5 (influences HLA class II expression); OTTHUMP00000082795; OTTHUMP00000196318; regulatory factor X
Note:	Anti-RFX5 is specific for the RFX5 protein. RFX5 is the fifth member of the growing family of DNA-binding proteins sharing a novel and highly characteristic DNA-binding domain called the RFX motif. Multiple alternatively spliced transcript variants have been found but the full-length nature of only two have been determined. RFX5 has been shown to interact with CIITA.
Protein Families:	Transcription Factors
Protein Pathways:	Antigen processing and presentation, Primary immunodeficiency



[View online »](#)

**Product images:**

Western Blot of Rabbit Anti-RFX5 antibody. Lane 1: Raji B cell nuclear extract lysates. Lane 2: none. Load: 35 ug per lane. Primary antibody: RFX5 antibody at 1:2,500 for overnight at 4°C. Secondary antibody: HRP Goat-a-Rabbit IgG secondary antibody at 1:5,000 for 45 min at RT. Block: 5% BLOTTO overnight at 4°C. Predicted/Observed size: 65.3 kDa, 72 kDa for RFX5. Other band (s): none.