

Product datasheet for **TA319306**

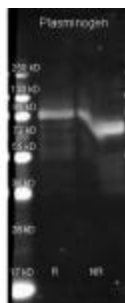
Plasminogen (PLG) Goat Polyclonal Antibody

Product data:

Product Type:	Primary Antibodies
Applications:	WB
Recommended Dilution:	ELISA: 1:20,000 - 1:100,000, WB: 1:2,000 - 1:10,000
Reactivity:	Human
Host:	Goat
Clonality:	Polyclonal
Immunogen:	Plasminogen [Human Plasma]
Formulation:	0.02 M Potassium Phosphate, 0.15 M Sodium Chloride, pH 7.2
Concentration:	lot specific
Conjugation:	Unconjugated
Storage:	Store at -20°C as received.
Stability:	Stable for 12 months from date of receipt.
Gene Name:	plasminogen
Database Link:	NP_000292 Entrez Gene 5340 Human P00747
Synonyms:	DKFZp779M0222
Protein Families:	Druggable Genome, Protease, Secreted Protein
Protein Pathways:	Complement and coagulation cascades, Neuroactive ligand-receptor interaction



[View online »](#)

Product images:

Goat anti Plasminogen antibody (200-101-208 lot 6571) was used to detect Plasminogen under reducing (R) and non-reducing (NR) conditions. Reduced samples of purified target proteins contained 4% BME and were boiled for 5 minutes. Samples of ~1ug of protein per lane were run by SDS-PAGE. Protein was transferred to nitrocellulose and probed with 1:3000 dilution of primary antibody (ON 4 C in MB-070). Detection shown was using Dylight 649 conjugated Donkey anti goat.