

Product datasheet for **TA319304**

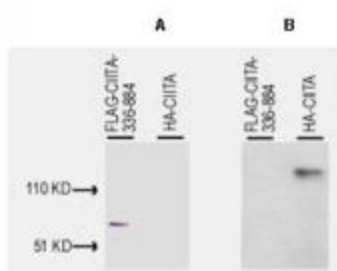
CIITA Rabbit Polyclonal Antibody

Product data:

Product Type:	Primary Antibodies
Applications:	WB
Recommended Dilution:	ELISA: 1:5,000 - 1:25,000, WB: 1:500 - 1:3,000
Reactivity:	Human
Host:	Rabbit
Isotype:	IgG
Clonality:	Polyclonal
Immunogen:	The immunogen used for this study was a bacterially produced recombinant FLAG-CIITA corresponding to amino acids 1 through 333 of the human protein.
Formulation:	None
Concentration:	lot specific
Conjugation:	Unconjugated
Storage:	Store at -20°C as received.
Stability:	Stable for 12 months from date of receipt.
Gene Name:	class II, major histocompatibility complex, transactivator
Database Link:	NP_000237 Entrez Gene 4261 Human P33076
Synonyms:	C2TA; CIITAIV; MHC2TA; NLRA
Note:	Anti-CIITA antibody detects CIITA. The transactivator CIITA regulates basal and interferon-induced expression of Major Histocompatibility Complex class II genes. CIITA restores expression of all MHC class II gene expression in mutant cells and corrects regulatory defects of MHC class II genes. Antibodies to this transactivator are useful in the study of diseases of pathological MHC class II expression. Antigen can be obtained from Raji cell lysates. Typically levels of CIITA expression are too low to detect endogenous levels of protein expression. Transiently transfected cells are usually employed to study this transcription factor.
Protein Pathways:	Antigen processing and presentation, Primary immunodeficiency



[View online »](#)

Product images:

WB of anti-CIITA against Cos7 cells lysates after transfection with FLAG-CIITA-336-884 or HA-CIITA. A: both samples on PVDF were incubated with 10ug/ml mouse anti-FLAG followed by ALP rabbit anti-mouse IgG at 200ug/mL. Result shows the overexpression of FLAG-CIITA-336-842 in Cos7 cells. B: both samples on PVDF were incubated with the ab at 1:500 for 45'. Result shows anti-CIITA (1-333) is specific for aa 1-333 of CIITA and that the antibody is not cross reactive with the FLAG portion of the immunogen.