

Product datasheet for **TA319295**

alpha 2 Macroglobulin (A2M) Goat Polyclonal Antibody

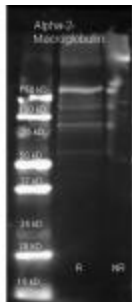
Product data:

Product Type:	Primary Antibodies
Applications:	WB
Recommended Dilution:	ELISA: 1:20,000 - 1:100,000, WB: 1:2,000 - 1:10,000, IHC: 1:500 - 1:2,500
Reactivity:	Human
Host:	Goat
Clonality:	Polyclonal
Immunogen:	a2-Macroglobulin [Human Plasma]
Formulation:	0.02 M Potassium Phosphate, 0.15 M Sodium Chloride, pH 7.2
Concentration:	lot specific
Conjugation:	Unconjugated
Storage:	Store at -20°C as received.
Stability:	Stable for 12 months from date of receipt.
Gene Name:	alpha-2-macroglobulin
Database Link:	NP_000005 Entrez Gene 2 Human P01023
Synonyms:	A2MD; CPAMD5; FWP007; S863-7
Protein Families:	Druggable Genome, Secreted Protein
Protein Pathways:	Complement and coagulation cascades

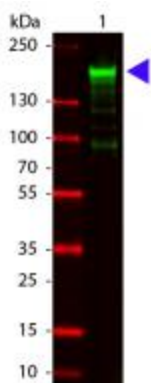


[View online »](#)

Product images:



Goat anti Alpha-2-Macroglobulin (200-101-207 lot 20172) was used to detect Alpha-2-Macroglobulin under reducing (R) and non-reducing (NR) conditions. Reduced samples of purified target proteins contained 4% BME and were boiled for 5 minutes. Samples of ~1ug of protein per lane were run by SDS-PAGE. Protein was transferred to nitrocellulose and probed with 1:3000 dilution of primary antibody (ON 4 C in MB-070). Detection shown was using Dylight 649 conjugated Donkey anti goat.



Western Blot of Goat anti-Alpha-2-Macroglobulin Antibody. Lane 1: Alpha-2-Macroglobulin. Lane 2: none. Load: 100 ng per lane. Primary antibody: Alpha-2-Macroglobulin antibody at 1:1000 for overnight at 4°C. Secondary antibody: DyLight™ 800 goat secondary antibody at 1:20,000 for 30 min at RT. Block: MB-070 for 30 min at RT. Predicted/Observed size: 163 kDa, 178 kDa for Alpha-2-Macroglobulin. Other band (s): Alpha-2-Macroglobulin splice variants and isoforms.