

Product datasheet for **TA319292**

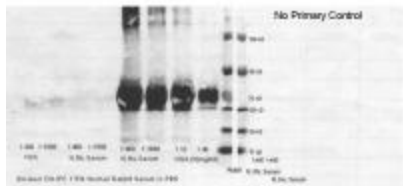
Albumin (ALB) Rabbit Polyclonal Antibody

Product data:

Product Type:	Primary Antibodies
Applications:	WB
Recommended Dilution:	ELISA: 1:10,000 - 1:50,000, WB: 1:1,000 - 1:5,000, IHC: 1:500 - 1:2,500
Reactivity:	Human
Host:	Rabbit
Isotype:	IgG
Clonality:	Polyclonal
Immunogen:	Anti-Human Serum Albumin Antibody was produced by repeated immunizations with Human Serum Albumin.
Formulation:	0.02 M Potassium Phosphate, 0.15 M Sodium Chloride, pH 7.2
Concentration:	lot specific
Conjugation:	Peroxidase
Storage:	Store at -20°C as received.
Stability:	Stable for 12 months from date of receipt.
Gene Name:	albumin
Database Link:	NP_000468 Entrez Gene 213 Human P02768
Synonyms:	HSA; PRO0883; PRO0903; PRO1341
Note:	Anti-Human Serum Albumin antibody detects Serum albumin protein. Serum albumin is the main protein of plasma. It has a good binding capacity for water, Ca ²⁺ , Na ⁺ , K ⁺ , fatty acids, hormones, bilirubin and drugs. Its main function is the regulation of the colloidal osmotic pressure of blood. ALB is the major zinc transporter in plasma; it typically binds about 80% of all plasma zinc. BSA antibody is ideal for investigators involved in Cell Signaling, Neuroscience and Signal Transduction research.
Protein Families:	Secreted Protein



[View online »](#)

Product images:

WB of human serum albumin. Lane 1: 1:400 of FBS. Lane 2: 1:1600 of FBS. Lane 3: 1:400 of normal rabbit serum. Lane 4: 1:1600 of normal rabbit serum. Lane 5: 1:400 of normal human serum. Lane 6: 1:1600 of normal human serum. Lane 7: 1:10 of human serum albumin (10mg/mL). Lane 8: 1:40 of human serum albumin (10mg/mL). Lane 9: molecular weight. Right Blot: Secondary only incubated for control. Primary antibody: human serum albumin at 1:400.