

## Product datasheet for **TA319289**

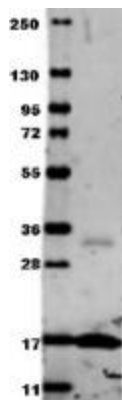
### TNF alpha (TNF) Rabbit Polyclonal Antibody

#### Product data:

Product Type:	Primary Antibodies
Applications:	IHC, WB
Recommended Dilution:	ELISA: 1:1,000 - 1:5,000, WB: 1:500 - 1:2,000
Reactivity:	Human, Primate
Host:	Rabbit
Isotype:	IgG
Clonality:	Polyclonal
Immunogen:	The whole rabbit serum was prepared by repeated immunizations with recombinant human TNFa produced in E.coli.
Formulation:	None
Concentration:	lot specific
Conjugation:	Unconjugated
Storage:	Store at -20°C as received.
Stability:	Stable for 12 months from date of receipt.
Gene Name:	tumor necrosis factor
Database Link:	<a href="#">NP_000585</a> <a href="#">Entrez Gene 7124 Human P01375</a>
Synonyms:	DIF; TNF-alpha; TNFA; TNFSF2
Protein Families:	Druggable Genome, Secreted Protein, Transcription Factors, Transmembrane
Protein Pathways:	Adipocytokine signaling pathway, Allograft rejection, Alzheimer's disease, Amyotrophic lateral sclerosis (ALS), Apoptosis, Asthma, Cytokine-cytokine receptor interaction, Dilated cardiomyopathy, Fc epsilon RI signaling pathway, Graft-versus-host disease, Hematopoietic cell lineage, Hypertrophic cardiomyopathy (HCM), MAPK signaling pathway, Natural killer cell mediated cytotoxicity, NOD-like receptor signaling pathway, RIG-I-like receptor signaling pathway, Systemic lupus erythematosus, T cell receptor signaling pathway, TGF-beta signaling pathway, Toll-like receptor signaling pathway, Type I diabetes mellitus, Type II diabetes mellitus



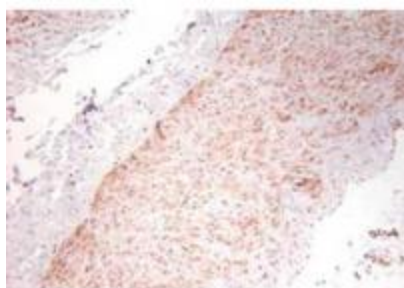
[View online »](#)

**Product images:**

Western blot using Anti-Human TNF-a (RABBIT) Antibody. Membrane blocked in 1% BSA-TBS-T 30 min RT, Rb-a-TNF alpha added at 1:1000 in 1% BSA-TBS-T o/n 4°C, DyLight 649 Gt-a-Rb 611-143-122 added at 1:20,000 in MB-070 30 min RT.



Fluorescent immunohistochemistry showing staining of human colon by anti-TNF alpha (formalin/PFA-fixed paraffin-embedded sections). Samples were formaldehyde-fixed, then blocked in 10% serum for 2 hours at 20°C. The primary antibody was diluted 1:100 and incubated with the sample for 2 hours at 20°C. Alexa Fluor® 680 goat polyclonal secondary antibody was used diluted 1:5000.



Immunohistochemistry using polyclonal TNFa antibody showing staining of formalin/PFA-fixed paraffin-embedded sections of human artery tissue sections. Sections were fixed in formaldehyde and subjected to heat mediated antigen retrieval in citrate buffer (pH 6.0). Slides were blocked for ten minutes with 1.5% serum. Primary antibody was diluted 1:100 and incubated with samples for 24 hours at 4°C. HRP-conjugated goat anti-rabbit antibody was used as the secondary antibody.