

Product datasheet for **TA319283**

IL2 Rabbit Polyclonal Antibody

Product data:

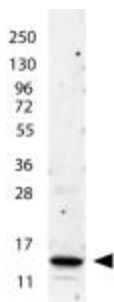
Product Type:	Primary Antibodies
Applications:	WB
Recommended Dilution:	ELISA: 1:10,000, WB: 1:1,000
Reactivity:	Human
Host:	Rabbit
Isotype:	IgG
Clonality:	Polyclonal
Immunogen:	IL-2 antibody was prepared from whole rabbit serum produced by repeated immunizations with full length recombinant human IL-2 protein.
Formulation:	0.02 M Potassium Phosphate, 0.15 M Sodium Chloride, pH 7.2
Concentration:	lot specific
Conjugation:	Unconjugated
Storage:	Store at -20°C as received.
Stability:	Stable for 12 months from date of receipt.
Gene Name:	interleukin 2
Database Link:	NP_000577 Entrez Gene 3558 Human P60568
Synonyms:	IL-2; lymphokine; TCGF
Note:	IL-2 is a secreted cytokine that is important for the proliferation of T and B lymphocytes. The receptor of this cytokine is a heterotrimeric protein complex whose gamma chain is also shared by interleukin 4 (IL4) and interleukin 7 (IL7). The expression of this gene in mature thymocytes is monoallelic, which represents an unusual regulatory mode for controlling the precise expression of a single gene. The targeted disruption of a similar gene in mice leads to ulcerative colitis-like disease, which suggests an essential role of this gene in the immune response to antigenic stimuli. Anti-IL-2 antibody is ideal for investigators involved in Immunology research.
Protein Families:	Druggable Genome, Secreted Protein



[View online »](#)

Protein Pathways:

Allograft rejection, Autoimmune thyroid disease, Cytokine-cytokine receptor interaction, Graft-versus-host disease, Jak-STAT signaling pathway, T cell receptor signaling pathway, Type I diabetes mellitus

Product images:

anti-Human IL-2 antibody shows detection of a band ~15 kDa in size corresponding to recombinant human IL-2. The identity of the faint higher molecular weight band may represent a homodimer. Molecular weight markers are also shown (left). After transfer, the membrane was blocked overnight with 3% BSA in TBS followed by reaction with primary antibody at a 1:1,000 dilution. Detection occurred using peroxidase conjugated anti-Rabbit IgG (p/n 611-103-122) secondary antibody diluted 1:40,000.