

Product datasheet for **TA319280**

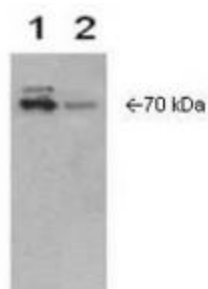
COX2 (PTGS2) Rabbit Polyclonal Antibody

Product data:

Product Type:	Primary Antibodies
Applications:	WB
Recommended Dilution:	ELISA: 1:10,000 - 1:50,000, WB: 1:5,000 - 1:10,000, IHC: User Optimized
Reactivity:	Human, Mouse, Rat
Host:	Rabbit
Isotype:	IgG
Clonality:	Polyclonal
Immunogen:	This whole rabbit serum was prepared by repeated immunizations with a fusion protein corresponding to the carboxy-terminus of human Cox-2.
Concentration:	lot specific
Conjugation:	Unconjugated
Storage:	Store at -20°C as received.
Stability:	Stable for 12 months from date of receipt.
Gene Name:	prostaglandin-endoperoxide synthase 2
Database Link:	NP_000954 Entrez Gene 19225 Mouse Entrez Gene 29527 Rat Entrez Gene 5743 Human P35354
Synonyms:	COX-2; COX2; GRIPGHS; hCox-2; HS; PGG; PGHS-2; PHS-2
Note:	COX-2, also known as prostaglandin H synthase, was identified less than a decade ago. Its discovery was followed by a period of discovery and drug development to create a “super aspirin” and led to insights into arthritis, Alzheimer's disease, colorectal cancer and regulation of brain and kidney function in search of better treatments for degenerative and inflammatory diseases. Two different isoforms of the enzyme are known, Cox-1 and Cox and Cox-2.
Protein Families:	Druggable Genome
Protein Pathways:	Arachidonic acid metabolism, Pathways in cancer, Small cell lung cancer, VEGF signaling pathway



[View online »](#)

Product images:

anti-Cox2 is shown to detect Cox-2 present in Cox-2 transfected Sf9 cell extract (lane 1) and IL-1 β induced WISH cell extract (lane 2). Detection occurs using a 1:10,000 dilution of antibody followed by 1:10,000 dilution of HRP Goat-a-Rabbit with visualization via ECL. Film exposure approximately 1'. Other detection systems will yield similar results.