

Product datasheet for **TA319269**

Thymidylate Synthase (TYMS) Sheep Polyclonal Antibody

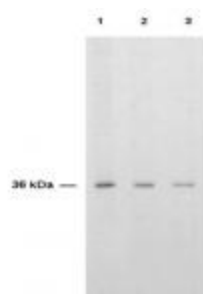
Product data:

Product Type:	Primary Antibodies
Applications:	WB
Recommended Dilution:	ELISA: 1:10,000 - 1:50,000, WB: 1:500 - 1:2,000
Reactivity:	Human
Host:	Sheep
Clonality:	Polyclonal
Immunogen:	Anti-THYMIDYLATE SYNTHASE was purified from rabbit serum after repeated immunizations with recombinant human Thymidylate Synthase (36 kDa) produced in E.coli.
Formulation:	0.02 M Potassium Phosphate, 0.15 M Sodium Chloride, pH 7.2
Conjugation:	Unconjugated
Storage:	Store at -20°C as received.
Stability:	Stable for 12 months from date of receipt.
Gene Name:	thymidylate synthetase
Database Link:	NP_001062 Entrez Gene 7298 Human P04818
Synonyms:	HST422; TMS; TS
Protein Families:	Druggable Genome
Protein Pathways:	Metabolic pathways, One carbon pool by folate, Pyrimidine metabolism



[View online »](#)

Product images:



Anti-TS is shown to detect thymidylate synthase present in a HeLa cell extract. Each lane is estimated to contain 4 ug of protein. Lanes 1, 2 and 3 represent 1:2,000, 1:5,000 and 1:10,000 fold dilutions of the antibody. Detection was made using HRP Rabbit-a-Sheep IgG (613-4302) diluted 1:1,000 and color development using TMB (TMBM-100) substrate for approximately 4'.