

Product datasheet for **TA319268**

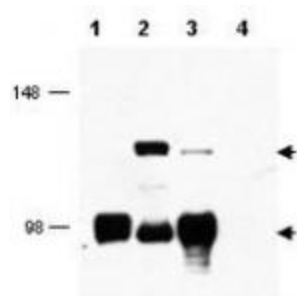
TORC1 (CRTC1) Rabbit Polyclonal Antibody

Product data:

Product Type:	Primary Antibodies
Applications:	WB
Recommended Dilution:	ELISA: 1:10,000 - 1:40,000, WB: 1:500 - 1:2,000
Reactivity:	Human, Mouse, Rat, Zebrafish, Bovine, Pufferfish
Host:	Rabbit
Isotype:	IgG
Clonality:	Polyclonal
Immunogen:	This affinity purified antibody was prepared from whole rabbit serum produced by repeated immunizations with a synthetic peptide corresponding to amino acids 19-34 of human MECT1 protein.
Formulation:	0.02 M Potassium Phosphate, 0.15 M Sodium Chloride, pH 7.2
Concentration:	lot specific
Conjugation:	Unconjugated
Storage:	Store at -20°C as received.
Stability:	Stable for 12 months from date of receipt.
Gene Name:	CREB regulated transcription coactivator 1
Database Link:	NP_001091952 Entrez Gene 382056 Mouse Entrez Gene 684527 Rat Entrez Gene 23373 Human Q6UUV9
Synonyms:	MECT1; TORC-1; TORC1; WAMTP1
Note:	This antibody is suitable for Cancer, Immunology and Nuclear Signaling research. MECT1 (also known as MucoEpidermoid Carcinoma Translocated 1, Transducer of regulated cAMP response element-binding protein 1, TORC1, and Transducer of CREB protein 1) is a nuclear protein that functions as a transcriptional coactivator for CREB1, which activates transcription through both consensus and variant cAMP response element (CRE) sites. MECT1 does not appear to modulate CREB1 DNA-binding activity but
Protein Families:	Transcription Factors



[View online »](#)

Product images:

WB using Anti-MECT2 antibody shows detection of MECT2 (lower arrowhead) and MECT2:MAML2 fusion protein (top arrowhead) in cell lysates. Lane 1 contains lysate from cells expressing MECT2 only. Lane 2 contains lysate from cells transfected with fusion protein. Lane 3 contains lysate from cells strongly expressing MECT2 and weakly expressing the fusion protein. Lane 4 contains lysate from control cells. Primary antibody was used at a 1:1000 dilution.