

Product datasheet for **TA319265**

CDK2 Rabbit Polyclonal Antibody

Product data:

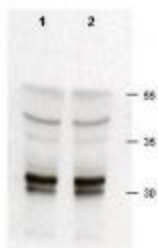
Product Type:	Primary Antibodies
Applications:	IHC, WB
Recommended Dilution:	ELISA: 1:1,000 - 1:5,000, WB: 1:200 - 1:1,000, IHC: 1:200 - 1:1,000, IP: 1:100
Reactivity:	Human, Mouse, Rat
Host:	Rabbit
Isotype:	IgG
Clonality:	Polyclonal
Immunogen:	Anti-cdk2 antibody was prepared from whole rabbit serum by repeated immunizations with a synthetic peptide corresponding to the C-terminus of the human cdk-2 protein conjugated to Keyhole Limpet Hemocyanin (KLH).
Formulation:	None
Concentration:	lot specific
Conjugation:	Unconjugated
Storage:	Store at -20°C as received.
Stability:	Stable for 12 months from date of receipt.
Gene Name:	cyclin-dependent kinase 2
Database Link:	NP_001789 Entrez Gene 12566 Mouse Entrez Gene 362817 Rat Entrez Gene 1017 Human P24941
Synonyms:	CDKN2; p33(CDK2)
Note:	Anti cdk2 antibody recognizes a protein encoded by a gene member of the Ser/Thr protein kinase family. This protein kinase is highly similar to the gene products of <i>S. cerevisiae</i> cdc28, and <i>S. pombe</i> cdc2. It is a catalytic subunit of the cyclin-dependent protein kinase complex, whose activity is restricted to the G1-S phase, and essential for cell cycle G1/S phase transition. This protein associates with and regulated by the regulatory subunits of the complex including cyclin A or E, CDK inhibitor p21Cip1 (CDKN1A) and p27Kip1 (CDKN1B). Its activity is also regulated by its protein phosphorylation. Two alternatively spliced variants and multiple transcription initiation sites of this gene have been reported.


[View online »](#)

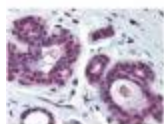
Protein Families: Druggable Genome, Protein Kinase

Protein Pathways: Cell cycle, Oocyte meiosis, p53 signaling pathway, Pathways in cancer, Progesterone-mediated oocyte maturation, Prostate cancer, Small cell lung cancer

Product images:



Rabbit anti-cdk2 was used at a 1:200 dilution to detect cdk-2 in asynchronous HeLa cell lysates (run in duplicate). Approximately 50 µg of lysate was separated on a 15% SDS-PAGE gel. Cdk-2 is indicated by an arrowhead as a 32-33 kDa band. Note that multiple isoforms as well as phosphorylated forms of cdk-2 may be detected by this antibody. Primary antibody was reacted at RT for 1 h. After subsequent washing, a 1:5,000 dilution of HRP conjugated Gt-a-Rabbit IgG preceded color development.



Anti-CDK2 antibody was diluted 1:500 to detect CDK2 in human skin tissue. Tissue was formalin fixed and paraffin embedded. No pre-treatment of sample was required. The image shows the localization of antibody as the precipitated red signal, with a hematoxylin purple nuclear counter stain.