

## Product datasheet for **TA319258**

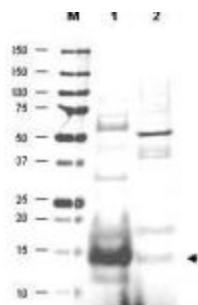
### UBE2N Goat Polyclonal Antibody

#### Product data:

Product Type:	Primary Antibodies
Applications:	WB
Recommended Dilution:	ELISA: 1:5,000 - 1:25,000, WB: 1:500 - 1:2,000
Reactivity:	Human
Host:	Goat
Clonality:	Polyclonal
Immunogen:	This affinity purified antibody was prepared from whole rabbit serum produced by repeated immunizations with a synthetic peptide corresponding to amino acids 40-51 of human UBC13 protein.
Formulation:	0.02 M Potassium Phosphate, 0.15 M Sodium Chloride, pH 7.2
Concentration:	lot specific
Conjugation:	Unconjugated
Storage:	Store at -20°C as received.
Stability:	Stable for 12 months from date of receipt.
Gene Name:	ubiquitin conjugating enzyme E2 N
Database Link:	<a href="#">NP_003339</a> <a href="#">Entrez Gene 7334 Human P61088</a>
Synonyms:	HEL-S-71; UBC13; UbcH-ben; UbcH13; UBCHBEN
Note:	UBC13 is a member of the E2 ubiquitin-conjugating enzyme family also known as Ubiquitin-conjugating enzyme E2 N, Ubiquitin-protein ligase N, Ubiquitin carrier protein N and Bendless-like ubiquitin-conjugating enzyme. The modification of proteins with ubiquitin is an important cellular mechanism for targeting abnormal or short-lived proteins for degradation. Ubiquitination involves at least three classes of enzymes: ubiquitin-activating enzymes, or E1s, ubiquitin-conjugating enzymes, or E2s, and ubiquitin-protein ligases, or E3s. This gene
Protein Families:	Druggable Genome
Protein Pathways:	Ubiquitin mediated proteolysis



[View online »](#)

**Product images:**

WB using Anti-UBC13 antibody shows detection of UBC13 protein in human small intestine lysate (lane 1) but not in mouse thymus lysate (lane 2). The heavily stained band in lane 1 (arrowhead) indicates this particular gel was overloaded with protein. The identity of minor reactive bands is unknown but could represent E2 complexes. The primary antibody was used at 1:500. Alexa Fluor™ 680 conjugated Rb-a-Goat IgG was used at 1:10000.