

Product datasheet for **TA319256**

Cullin 1 (CUL1) Rabbit Polyclonal Antibody

Product data:

Product Type:	Primary Antibodies
Applications:	IHC
Recommended Dilution:	ELISA: 1:2,000 - 1:10,000, WB: 1:500 - 1:1,000, IHC: User Optimized
Reactivity:	Human
Host:	Rabbit
Isotype:	IgG
Clonality:	Polyclonal
Immunogen:	This antibody was prepared from whole rabbit serum produced by repeated immunizations with a synthetic peptide corresponding to amino acids 766-776 of Human Cul1 (C-terminus) coupled to KLH.
Formulation:	None
Concentration:	lot specific
Conjugation:	Unconjugated
Storage:	Store at -20°C as received.
Stability:	Stable for 12 months from date of receipt.
Gene Name:	cullin 1
Database Link:	NP_003583 Entrez Gene 8454 Human Q13616
Synonyms:	MGC149834; MGC149835

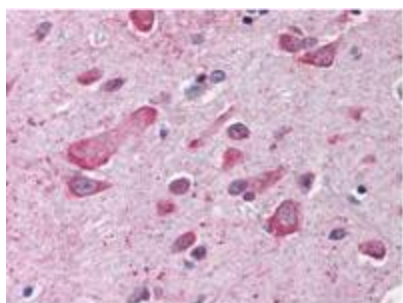
[View online »](#)

Note: Cullins assemble a potentially large number of ubiquitin ligases by binding to the RING protein ROC1 to catalyse polyubiquitination, as well as binding to various specificity factors to recruit substrates. Cullin 1 is an essential component of the SCF (SKP1-CUL1-F-box protein) E3 ubiquitin ligase complex, which mediates the ubiquitination of proteins involved in cell cycle progression, signal transduction and transcription. In the SCF complex, cul1 serves as a rigid scaffold that organizes the SKP1-F-box protein and RBX1 subunits. Cul1 may also contribute to catalysis through positioning of the substrate and the ubiquitin-conjugating enzyme. Cul1 is part of the SCF complex consisting of CUL1, RBX1, SKP1 and SKP2, where it interacts directly with SKP1, SKP2 and RBX1. Cul1 also interacts with RNF7 and is part of a complex with TIP120A/CAND1 and RBX1. The unneddylated form interacts with TIP120A/CAND1 and the interaction negatively regulates the association with SKP1 in the SCF complex.

Protein Families: Druggable Genome

Protein Pathways: Cell cycle, Oocyte meiosis, TGF-beta signaling pathway, Ubiquitin mediated proteolysis, Wnt signaling pathway

Product images:



Anti-CUL1 antibody was diluted 1:500 to detect CUL1 in human brain cortex tissue. Tissue was formalin fixed and paraffin embedded. No pre-treatment of sample was required. The image shows the localization of antibody as the precipitated red signal, with a hematoxylin purple nuclear counter stain.