

## Product datasheet for **TA319253**

### Aurora B (AURKB) Rabbit Polyclonal Antibody

#### Product data:

Product Type:	Primary Antibodies
Applications:	IHC, WB
Recommended Dilution:	ELISA: 1:10,000 - 1:50,000, WB: 1:250 - 1:2,000, IF: User Optimized
Reactivity:	Human
Host:	Rabbit
Isotype:	IgG
Clonality:	Polyclonal
Immunogen:	This affinity purified antibody was prepared from whole rabbit serum produced by repeated immunizations with a synthetic peptide corresponding aa 223-234 of Human Aurora Kinase B protein.
Formulation:	0.02 M Potassium Phosphate, 0.15 M Sodium Chloride, pH 7.2
Concentration:	lot specific
Conjugation:	Unconjugated
Storage:	Store at -20°C as received.
Stability:	Stable for 12 months from date of receipt.
Gene Name:	aurora kinase B
Database Link:	<a href="#">NP_001243763</a> <a href="#">Entrez Gene 9212 Human</a> <a href="#">Q96GD4</a>
Synonyms:	AIK2; AIM-1; AIM1; ARK2; AurB; aurkb-sv1; aurkb-sv2; IPL1; PPP1R48; STK5; STK12

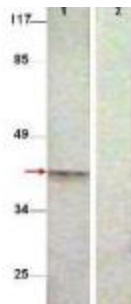


[View online »](#)

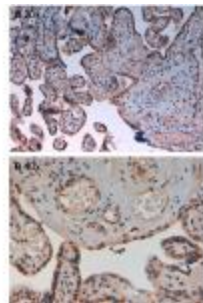
**Note:** Aurora Kinase B (also known as Aurora and Ipl1-like midbody-associated protein 1, AIM-1, Aurora/IPL1-related kinase 2, Aurora-related kinase 2, STK-1, and Aurora-B) is a Ser/Thr protein kinase member of the Aurora subfamily that may be directly involved in regulating the cleavage of polar spindle microtubules and is a key regulator for the onset of cytokinesis during mitosis. Aurora Kinase B is localized to the midzone of central spindle in late anaphase and concentrated into the midbody in telophase and cytokinesis and is colocalized with gamma tubulin in the mid-body. High levels of Aurora B expression are seen in the thymus, although it is also expressed in the spleen, lung, testis, colon, placenta and fetal liver. Aurora B is expressed during S and G2/M phase and expression is up-regulated in cancer cells during M phase.

**Protein Families:** Druggable Genome, Protein Kinase, Stem cell - Pluripotency

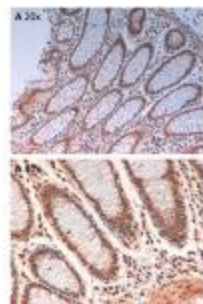
**Product images:**



Western Blot shows detection of Aurora B protein at 39 kDa (predicted band size). All lanes : Aurora B (phospho T232) antibody diluted 1:500. Lane 1 : Extract from COS7 cells treated with Nocodazole (1ug/ml, 16 hrs). Lane 2 : Extract from COS7 cells treated with Nocodazole (1ug/ml, 16 hrs) and with the phosphopeptide immunogen.



Immunohistochemistry of Rabbit Anti-AuroraB pT232 Antibody. Tissue: human placenta pH9 (A) at 20x and 40x. Fixation: formalin fixed paraffin embedded. Antigen retrieval: not required. Primary antibody: AuroraB pT232 antibody at 10 ug/mL for 1 h at RT. Secondary antibody: Peroxidase rabbit secondary antibody at 1:10,000 for 45 min at RT. Localization: AuroraB pT232 is cytoplasmic. Staining: AuroraB pT232 as precipitated brown signal with hematoxylin purple nuclear counterstain.



Immunohistochemistry of Rabbit Anti-AuroraB pT232 Antibody. Tissue: human intestine pH9 (A) at 20x and 40x. Fixation: formalin fixed paraffin embedded. Antigen retrieval: not required. Primary antibody: AuroraB pT232 antibody at 10 ug/mL for 1 h at RT. Secondary antibody: Peroxidase rabbit secondary antibody at 1:10,000 for 45 min at RT. Localization: AuroraB pT232 is cytoplasmic. Staining: AuroraB pT232 as precipitated brown signal with hematoxylin purple nuclear counterstain.