

Product datasheet for **TA319251**

HDAC1 Rabbit Polyclonal Antibody

Product data:

Product Type:	Primary Antibodies
Applications:	IF, IHC, WB
Recommended Dilution:	ELISA: 1:10,000 - 1:50,000, WB: 1:1,000 - 1:5,000, IHC: 1:200 - 1:1,000
Reactivity:	Human
Host:	Rabbit
Isotype:	IgG
Clonality:	Polyclonal
Immunogen:	Anti-HDAC-1 antibody was prepared from whole rabbit serum produced by repeated immunizations with a synthetic peptide corresponding to amino acids 466-482 of Human HDAC-1.
Formulation:	0.02 M Potassium Phosphate, 0.15 M Sodium Chloride, pH 7.2
Concentration:	lot specific
Conjugation:	Unconjugated
Storage:	Store at -20°C as received.
Stability:	Stable for 12 months from date of receipt.
Gene Name:	histone deacetylase 1
Database Link:	NP_004955 Entrez Gene 3065 Human Q13547
Synonyms:	GON-10; HD1; RPD3; RPD3L1
Note:	HDAC-1 antibody recognizes HDAC1 (also known as HD1, histone deacetylase 1, RPD3, RPD3L1) which belongs to the histone deacetylase/acuc/apha family and is a component of the histone deacetylase complex. Histone acetylation and deacetylation, catalyzed by multisubunit complexes, play a key role in the regulation of eukaryotic gene expression. It also interacts with retinoblastoma tumor-suppressor protein and this complex is a key element in the control of cell proliferation and differentiation. Together with metastasis-associated protein-2, it deacetylates p53 and modulates its effect on cell growth and apoptosis.

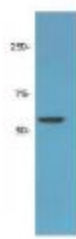


[View online »](#)

Protein Families: Adult stem cells, Druggable Genome, Stem cell - Pluripotency, Stem cell relevant signaling - DSL/Notch pathway, Transcription Factors

Protein Pathways: Cell cycle, Chronic myeloid leukemia, Huntington's disease, Notch signaling pathway, Pathways in cancer

Product images:



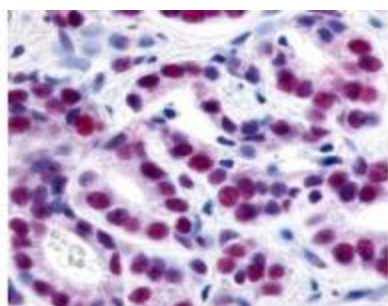
Western Blot of Rabbit Anti-HDAC-1 Antibody. Lane 1: LNCaP prostate cancer cells. Lane 2: none. Load: 50 ug per lane. Primary antibody: HDAC-1 antibody at 1:1000 for overnight at 4°C. Secondary antibody: IRDye800™ rabbit secondary antibody at 1:10,000 for 45 min at RT. Block: 5% BLOTTO overnight at 4°C. Predicted/Observed size: 55kDa for HDAC-1. Other band (s): none.



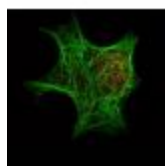
Western Blot of Rabbit Anti-HDAC-1 Antibody. Lane 1: 293 whole cell lysate. Lane 2: none. Load: 35 ug per lane. Primary antibody: HDAC-1 antibody at 1:3, 500 for overnight at 4°C. Secondary antibody: IRDye800™ rabbit secondary antibody at 1:10,000 for 45 min at RT. Block: 5% BLOTTO overnight at 4°C. Predicted/Observed size: ~65 kDa corresponding to human HDAC1. Other band (s): none.



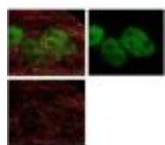
Immunohistochemistry of Rabbit Anti-HDAC-1 Antibody. Tissue: human lung tissue. Fixation: formalin fixed paraffin embedded. Antigen retrieval: not required. Primary antibody: HDAC-1 antibody at 10 ug/mL for 1 h at RT. Secondary antibody: Peroxidase rabbit secondary antibody at 1:10,000 for 45 min at RT. Localization: HDAC-1 is nuclear. Staining: HDAC-1 as brown color indicates presence of protein, blue color shows cell nuclei.



Immunohistochemistry of Rabbit Anti-HDAC-1 Antibody. Tissue: human prostate cancer tissue. Fixation: formalin fixed paraffin embedded. Antigen retrieval: not required. Primary antibody: HDAC-1 antibody at 1:500 for 1 h at RT. Secondary antibody: Peroxidase rabbit secondary antibody at 1:10,000 for 45 min at RT. Localization: HDAC-1 is nuclear. Staining: HDAC-1 precipitated purple with blue counterstain.



IF of Rabbit Anti-HDAC-1 antibody. Fixation: 0.5% PFA. Antigen retrieval: not required. Primary antibody: HDAC-1 antibody at 10 ug/mL for 1 h at RT. Secondary antibody: rabbit secondary antibody at 1:10,000 for 45 min at RT. Localization: HDAC-1 is nuclear. Staining: HDAC-1 was used with Atto 425 (shown in red). Anti-Keratin monoclonal antibody was used with Dylight 488 (shown in green) to detect Keratin. Data was collected on a STED-CW TCS-SP5 Confocal system (Leica Microsystems).



Immunofluorescence Microscopy of Rabbit anti-HDAC1 Antibody. Tissue: A431 cells. Fixation: methanol. Antigen retrieval: blocked with normal goat serum. Primary antibody: HDAC1 antibody at 04 ug/mL for 1 h at RT. Secondary antibody: rabbit secondary antibody at 0.2 ug/mL for 45 min at RT. Localization: HDAC1 is nuclear. Staining: HDAC1 as green fluorescent signal. A-tubulin monoclonal antibody detected with ATTO 425 (colored RED). 2-color STED image, Leica Microsystems.