

Product datasheet for **TA319243**

Rb2 p130 (RBL2) Rabbit Polyclonal Antibody

Product data:

Product Type:	Primary Antibodies
Applications:	WB
Recommended Dilution:	ELISA: 1:75,000 - 1:100,000, WB: 1:500 - 1:5,000, IP: 1:100
Reactivity:	Human, Chimpanzee
Host:	Rabbit
Isotype:	IgG
Clonality:	Polyclonal
Immunogen:	This affinity purified antibody was prepared by repeated immunizations with a synthetic peptide corresponding to the Spa310 sequence of pRb2/p130 protein. A residue of cysteine was added to facilitate coupling.
Formulation:	0.02 M Potassium Phosphate, 0.15 M Sodium Chloride, pH 7.2
Concentration:	lot specific
Conjugation:	Unconjugated
Storage:	Store at -20°C as received.
Stability:	Stable for 12 months from date of receipt.
Gene Name:	RB transcriptional corepressor like 2
Database Link:	NP_005602 Entrez Gene 5934 Human Q08999
Synonyms:	P130; Rb2



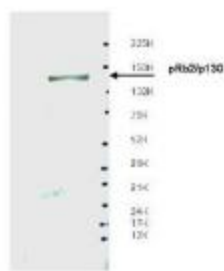
[View online »](#)

Note: Spa310 is a 39 aa-long polypeptide encoded by a sequence which resides in the spacer region of the tumor suppressor Rb2 gene. Rb2 is a member of the retinoblastoma (Rb) gene family. Proteins in this family, which also include pRb/p105 and pRb/p107, are important cellular factors which play well-recognized roles as tumor and growth suppressors. Both p107 and pRb2/p130 share the ability to physically interact and inhibit the kinase activity of the Cdk2/Cyclin A and Cdk2/Cyclin E complexes, which play critical roles in cell cycle regulation. Spa310 is the region of the pRb2/p130 protein that is responsible for Cdk2/Cyclin E/A inhibition. Spa310 has also been shown to suppress cell growth as observed by colony formation, and to reduce volume of tumor growth in nude mice, likely through arrest in the G₀/G₁ phase of the cell cycle. Understandably, the Spa310 small molecule represents a potentially significant pharmaceutical product in the treatment of hyperproliferative disorders.

Protein Families: Druggable Genome, Transcription Factors

Protein Pathways: Cell cycle, TGF-beta signaling pathway

Product images:



WB using Anti-Spa310 antibody shows detection of endogenous pRb2/p130 protein in whole LNCaP cell extracts. The band at ~130 kDa, indicated by the arrowhead, corresponds to the expected molecular weight of pRb2/p130. The membrane was blocked overnight with a milk buffer at 4°. Primary antibody was diluted 1:500 and reacted with the membrane overnight at 4°. ECL was used for detection.