

Product datasheet for **TA319242**

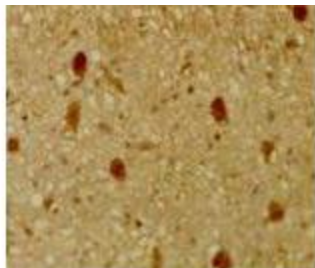
Rb2 p130 (RBL2) Rabbit Polyclonal Antibody

Product data:

Product Type:	Primary Antibodies
Applications:	IHC
Recommended Dilution:	ELISA: 1:5,000 - 1:20,000, WB: 1:500 - 1:2,000, IHC: 1:200 - 1:1,000, IP: 1:100
Reactivity:	Human, Mouse, Rat
Host:	Rabbit
Isotype:	IgG
Clonality:	Polyclonal
Immunogen:	Rb2 (p130) peptide corresponding to a region near the C-terminus of the human protein conjugated to Keyhole Limpet Hemocyanin (KLH).
Formulation:	0.02 M Potassium Phosphate, 0.15 M Sodium Chloride, pH 7.2
Concentration:	lot specific
Conjugation:	Unconjugated
Storage:	Store at -20°C as received.
Stability:	Stable for 12 months from date of receipt.
Gene Name:	RB transcriptional corepressor like 2
Database Link:	NP_005602 Entrez Gene 19651 MouseEntrez Gene 81758 RatEntrez Gene 5934 Human Q08999
Synonyms:	P130; Rb2
Protein Families:	Druggable Genome, Transcription Factors
Protein Pathways:	Cell cycle, TGF-beta signaling pathway



[View online »](#)

Product images:

IHC staining of mouse tissue using anti-pRb2/p130 antiserum. Slides were incubated at 20°C for 1 h with rabbit anti-pRb2/p130 (1:500) dilution, washed, and then reacted with diluted goat anti-rabbit biotinylated antibody for 30 min. Slides were then reacted with streptavidin-peroxidase conjugate for 30 min at 20°C. Diaminobenzidine was used as the final chromogen.