

## Product datasheet for **TA319236**

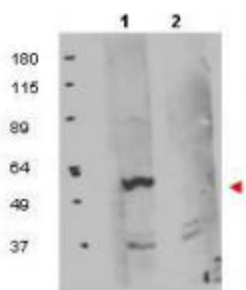
### FKBP38 (FKBP8) Rabbit Polyclonal Antibody

#### Product data:

Product Type:	Primary Antibodies
Applications:	WB
Recommended Dilution:	ELISA: 1:25,000, WB: 1:500 - 1:2,000, IHC: User Optimized
Reactivity:	Human, Mouse, Rat
Host:	Rabbit
Isotype:	IgG
Clonality:	Polyclonal
Immunogen:	This protein A purified antibody was prepared from whole rabbit serum produced by repeated immunizations with a synthetic peptide corresponding to an internal region of human FKBP8 protein.
Formulation:	0.02 M Potassium Phosphate, 0.15 M Sodium Chloride, pH 7.2
Concentration:	lot specific
Conjugation:	Unconjugated
Storage:	Store at -20°C as received.
Stability:	Stable for 12 months from date of receipt.
Gene Name:	FK506 binding protein 8
Database Link:	<a href="#">NP_036313</a> <a href="#">Entrez Gene 14232 Mouse</a> <a href="#">Entrez Gene 290652 Rat</a> <a href="#">Entrez Gene 23770 Human</a> <a href="#">Q14318</a>
Synonyms:	FKBP38; FKBP8
Note:	This antibody is suitable for Cancer, Immunology and Nuclear Signaling research. FKBP8 (also known as FK506-binding protein 38) is a member of the immunophilin family that has been implicated to play an important role in apoptosis through its involvement in the mechanism that targets Bcl-2 and Bcl-xL to the outer mitochondrial membrane (OMM). Suppression of endogenous FKBP8 by RNAi or transfection of a mutant FKBP8 missing the transmembrane domain necessary for mitochondrial insertion, resulted in the translocation of Bcl-2 and Bcl-xL from the OMM to the cytosol. It has also been suggested that FKBP8 may play
Protein Families:	Druggable Genome, Transmembrane



[View online »](#)

**Product images:**

WB using anti-FKBP8 antibody shows detection of exogenous FKBP8 in 50 ug of HEK293T whole cell lysate (lane 1). The results of peptide competition are shown in lane 2 where no specific staining is noted after the antibody is first incubated for 1h with the immunizing peptide in 5% BLOTTO prior to reaction with the membrane. The membrane was probed with the primary antibody at a 1:1,000 dilution in 5% BLOTTO at 4°C, overnight. Personal Communication, Olga Aprelikova, CCR-NCI, Bethesda, MD.