

Product datasheet for **TA319235**

UBC6e (UBE2J1) Rabbit Polyclonal Antibody

Product data:

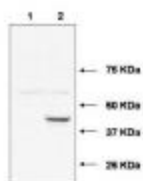
Product Type:	Primary Antibodies
Applications:	WB
Recommended Dilution:	ELISA: 1:1,000 - 1:5,000, WB: 1:200 - 1:2,000, IP: 1-2 ug
Reactivity:	Human
Host:	Rabbit
Isotype:	IgG
Clonality:	Polyclonal
Immunogen:	This affinity purified antibody was prepared from whole rabbit serum produced by repeated immunizations with a synthetic peptide corresponding to residues near the amino terminus of the human Ube2j1 protein.
Formulation:	0.02 M Potassium Phosphate, 0.15 M Sodium Chloride, pH 7.2
Concentration:	lot specific
Conjugation:	Unconjugated
Storage:	Store at -20°C as received.
Stability:	Stable for 12 months from date of receipt.
Gene Name:	ubiquitin conjugating enzyme E2 J1
Database Link:	NP_057105 Entrez Gene 51465 Human Q9Y385
Synonyms:	CGI-76; HSPC153; HSPC205; HSU93243; NCUBE-1; NCUBE1; UBC6; UBC6E; Ubc6p
Note:	This antibody is suitable for Cancer, Immunology and Nuclear Signaling research. Ube2j1 and Ube2j2 are homologs of the yeast ubiquitin-conjugating enzyme UBC6, which catalyzes the covalent attachment of ubiquitin to other proteins. These proteins constitute a distinct family of ubiquitin-conjugating enzymes sharing a conserved non-canonical active site sequence and a C-terminal transmembrane domain. By analogy with yeast UBC6, Ube2j1 and Ube2j2 are localized to the endoplasmic reticulum and seem to function in the selective degradation of misfolded membrane proteins and in general mediation of the stress response.
Protein Families:	Transmembrane



[View online »](#)

Protein Pathways: Parkinson's disease, Ubiquitin mediated proteolysis

Product images:



Western blot using affinity purified anti-Ube2j1 antibody shows detection of Ube2j1 in 293 cells over-expressing Myc-Ube2j1 (Lane 2). Lane 1 contains lysate from mock-transfected 293 cells. Personal Communication, A. Weissman & T. Shang, CCR-NCI, Frederick, MD