

Product datasheet for **TA319234**

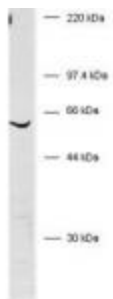
BIVM Rabbit Polyclonal Antibody

Product data:

Product Type:	Primary Antibodies
Applications:	WB
Recommended Dilution:	ELISA: 1:5,000 - 1:25,000, WB: 1:1,000
Reactivity:	Human
Host:	Rabbit
Isotype:	IgG
Clonality:	Polyclonal
Immunogen:	BIVM peptide corresponding to a region near carboxy terminus of the human protein conjugated to Keyhole Limpet Hemocyanin (KLH). Sequence information: C-R-N-S-G-Y-Q-G-Y-S-D-Y-D-G-N-D
Formulation:	0.02 M Potassium Phosphate, 0.15 M Sodium Chloride, pH 7.2
Concentration:	lot specific
Conjugation:	Unconjugated
Storage:	Store at -20°C as received.
Stability:	Stable for 12 months from date of receipt.
Gene Name:	basic, immunoglobulin-like variable motif containing
Database Link:	NP_001153068 Entrez Gene 54841 Human Q86UB2
Synonyms:	FLJ44301; FLJ44556; MGC133326
Note:	BIVM (for basic, immunoglobulin-like variable motif-containing) refers to a recently identified gene product that maps to human chromosome 13q32-q33 and is predicted to encode a 503-amino acid protein. BIVM shows ubiquitous expression in normal human tissue and the presence of a 5' CpG island suggests it is a housekeeping gene. BIVM is likely essential for some aspect of basic cellular function. BIVM is highly charged and localizes to the cytoplasm and nucleus where it may bind to either DNA or RNA or associate with other cellular proteins. Significant sequence homology exists with many organisms.



[View online »](#)

Product images:

WB of anti-human BIVM. Whole cell HeLa lysate was used to probe for endogenous BIVM using Rabbit-anti-Human BIVM (C-terminal specific) polyclonal antibody. A 57 kDa band corresponding to human BIVM protein is detected using a 1:1,000 dilution of the antiserum. Washes with 1% Tween-20 TBS preceded reaction with HRP Gt-a-Rabbit IgG (H&L) code 611-103-122 diluted 1:10,000 and incubated for 1 hour at room temperature.