

Product datasheet for **TA319231**

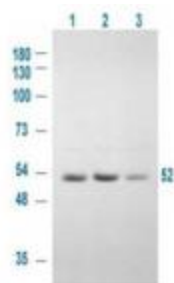
GSK3 alpha (GSK3A) Rabbit Polyclonal Antibody

Product data:

Product Type:	Primary Antibodies
Applications:	WB
Recommended Dilution:	ELISA: 1:2,000 - 1:10,000, WB: 1:500 - 1:3,000, IF: User Optimized
Reactivity:	Human
Host:	Rabbit
Isotype:	IgG
Clonality:	Polyclonal
Immunogen:	This affinity purified antibody was prepared from whole rabbit serum produced by repeated immunizations with a synthetic peptide corresponding aa 16-25 of human GSK3 alpha.
Formulation:	0.02 M Potassium Phosphate, 0.15 M Sodium Chloride, pH 7.2
Concentration:	lot specific
Conjugation:	Unconjugated
Storage:	Store at -20°C as received.
Stability:	Stable for 12 months from date of receipt.
Gene Name:	glycogen synthase kinase 3 alpha
Database Link:	NP_063937 Entrez Gene 2931 Human P49840
Synonyms:	DKFZp686D0638
Note:	Glycogen synthase kinase 3 alpha (GSK3A) belongs to the ser/thr family of protein kinases, Cdc2/cdkx subfamily; gsk-3 subsubfamily. It is implicated in the hormonal control of several regulatory proteins including glycogen synthase, myb, and the transcription factor c-jun. GSK3A is a proline-directed serine-threonine kinase that was initially identified as a phosphorylating and inactivating glycogen synthase. Two isoforms, alpha (GSK3A) and beta (GSK3B), show a high degree of amino acid homology. GSK3B is involved in energy metabolism, neuronal cell development, and body pattern formation.
Protein Families:	Druggable Genome, Protein Kinase
Protein Pathways:	Chemokine signaling pathway



[View online »](#)

Product images:

WB using Anti-GSK3A antibody shows detection of a 52 kDa band corresponding to human GSK3A in various human derived 293T cell extracts. Lane 1: control, Lane 2: treated with IGF-1 (100 ng/ml) for 20 min, Lane 3: pre-treated with 10 uM [LY294002] (selective PI3K inhibitor) and treated with IGF-1 (100 ng/ml) for 20 min. Lane 1 shows some baseline GSK3A reactivity that is intensified upon stimulation (Lane 2) and diminished when an inhibitor is added (lane 3). Primary antibody was used at 1:1,000.