

Product datasheet for **TA319230**

Cyclin B1 (CCNB1) Rabbit Polyclonal Antibody

Product data:

Product Type:	Primary Antibodies
Applications:	WB
Recommended Dilution:	ELISA: 1:50,000, WB: 1:100 - 1:1,000, IP: 1:100
Reactivity:	Human, Mouse, Dog, Hamster, Rat, Chimpanzee
Host:	Rabbit
Isotype:	IgG
Clonality:	Polyclonal
Immunogen:	This affinity purified antibody was prepared from whole rabbit serum produced by repeated immunizations with a synthetic peptide corresponding to amino acids 120-131 of Human Cyclin B1 protein.
Formulation:	0.02 M Potassium Phosphate, 0.15 M Sodium Chloride, pH 7.2
Concentration:	lot specific
Conjugation:	Unconjugated
Storage:	Store at -20°C as received.
Stability:	Stable for 12 months from date of receipt.
Gene Name:	cyclin B1
Database Link:	NP_114172 Entrez Gene 25203 Rat Entrez Gene 268697 Mouse Entrez Gene 608420 Dog Entrez Gene 891 Human P14635
Synonyms:	CCNB



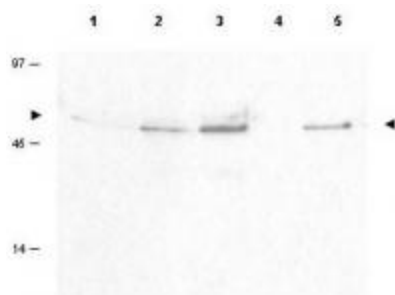
[View online »](#)

Note: Cyclin B1 (also called CCNB1 and G2/mitotic-specific cyclin B1) is a regulatory protein involved in mitosis. The gene product complexes with p34(cdc2) to form a serine/threonine kinase holoenzyme complex called the maturation-promoting factor (MPF). Two alternative transcripts have been found a constitutively expressed transcript and a cell cycle-regulated transcript that is expressed predominantly during G2/M phase. The different transcripts result from the use of alternate transcription initiation sites. S126 phosphorylation, the site of phosphorylation recognized by this antibody, is involved in an auto-phosphorylation of the cdk -cyclin complex. Recognition of this phosphorylated site suggests the antibody is useful to detect the active form of the complex and may serve as a marker of mitosis.

Protein Families: Druggable Genome, Stem cell - Pluripotency

Protein Pathways: Cell cycle, Oocyte meiosis, p53 signaling pathway, Progesterone-mediated oocyte maturation

Product images:



WB using Anti-Cyclin B pS126 antibody shows detection of a band ~48 kDa corresponding to phosphorylated human Cyclin B (arrowheads) in various whole cell lysates. Lysates tested were lane 1 - HeLa (cervical carcinoma), lane 2 - H23 (lung carcinoma), lane 3 - Hep3b (Hepatocarcinoma), lane 4 - T98G (Glioblastoma) and lane 5 - Daudi (B cell lymphoblast). The primary antibody was used at 1:100. HRP conjugated Gt-a-Rabbit IgG [H&L] was used at 1:5000.