

Product datasheet for **TA319229**

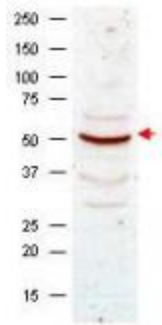
Cyclin B1 (CCNB1) Rabbit Polyclonal Antibody

Product data:

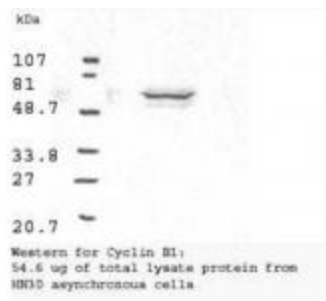
Product Type:	Primary Antibodies
Applications:	IHC, WB
Recommended Dilution:	ELISA: 1:2,000 - 1:10,000, WB: 1:500 - 1:1,000, IP: 1:100
Reactivity:	Human, Rat, Mouse
Host:	Rabbit
Isotype:	IgG
Clonality:	Polyclonal
Immunogen:	Anti-Cyclin B1 antibody was produced by repeated immunizations of full length fusion protein corresponding to the human gene.
Formulation:	None
Concentration:	lot specific
Conjugation:	Unconjugated
Storage:	Store at -20°C as received.
Stability:	Stable for 12 months from date of receipt.
Gene Name:	cyclin B1
Database Link:	NP_114172 Entrez Gene 25203 Rat Entrez Gene 268697 Mouse Entrez Gene 891 Human P14635
Synonyms:	CCNB
Note:	The protein encoded by this gene is a regulatory protein involved in mitosis. The gene product forms a complex with p34 (cdc2) to form the maturation-promoting factor (MPF). Two alternative transcripts have been found, a constitutively expressed transcript and a cell cycle-regulated transcript that is expressed predominantly during G2/M phase. The different transcripts result from the use of alternate transcription initiation sites.
Protein Families:	Druggable Genome, Stem cell - Pluripotency
Protein Pathways:	Cell cycle, Oocyte meiosis, p53 signaling pathway, Progesterone-mediated oocyte maturation



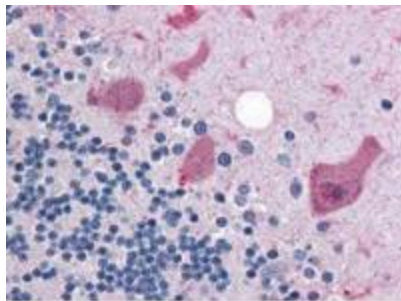
[View online »](#)

Product images:


WB analysis using anti-Cyclin B1 antibody shows detection of Cyclin B1 present in asynchronous HeLa cell lysates. Comparison to a molecular weight marker indicates a band of ~55 kDa corresponding to human Cyclin B1 (arrowhead). The blot was incubated with a 1:500 dilution of the antibody for 1 h at room temperature. Detection occurred using a 1:10,000 of HRP conjugated Goat-a-Rabbit IgG.



WB analysis using anti-cyclin B antibody shows detection of human Cyclin B present in asynchronous HN30 cell lysates. HN30 cells are from head and neck cancer tumors that over express cyclin B and D. Comparison to a molecular weight marker indicates a band of ~62 kDa corresponding to the expected molecular weight for the protein (arrowhead). The blot was incubated with a 1:500 dilution of the antibody. Detection occurred using a 1:10,000 of HRP conjugated Goat-a-Rabbit IgG.



anti-Cyclin B1 antibody was diluted 1:500 to detect Cyclin B1 in human brain cerebellum tissue. Tissue was formalin fixed and paraffin embedded. No pre-treatment of sample was required. The image shows the localization of antibody as the precipitated red signal, with a hematoxylin purple nuclear counter stain.