

Product datasheet for **TA319227**

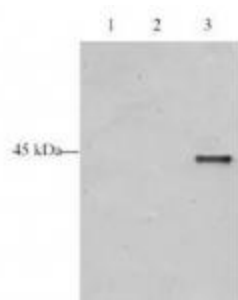
ING5 Goat Polyclonal Antibody

Product data:

Product Type:	Primary Antibodies
Applications:	WB
Recommended Dilution:	ELISA: 1:4,000 - 1:16,000, WB: 1:500 - 1:1,000
Reactivity:	Human
Host:	Goat
Clonality:	Polyclonal
Immunogen:	This affinity purified antibody was prepared from whole goat serum produced by repeated immunizations with a synthetic peptide corresponding aa 127-140 of Human p28 ING5 protein (Inhibitor of growth family, member 5). This sequence shows homology to isoforms 1 and 2 for ING5.
Formulation:	0.02 M Potassium Phosphate, 0.15 M Sodium Chloride, pH 7.2
Concentration:	lot specific
Conjugation:	Unconjugated
Storage:	Store at -20°C as received.
Stability:	Stable for 12 months from date of receipt.
Gene Name:	inhibitor of growth family member 5
Database Link:	NP_115705 Entrez Gene 84289 Human Q8WYH8
Synonyms:	p28ING5
Note:	p28 ING5 is a tumor suppressor protein similar to ING1 that can interact with TP53, inhibit cell growth, and induce apoptosis. This protein contains a PHD-finger, which is a common motif in proteins involved in chromatin remodeling. This protein can bind TP53 and EP300/p300, a component of the histone acetyl transferase complex, suggesting its involvement in TP53-dependent regulatory pathway. Multiple alternatively spliced transcript variants have been observed. The accession number listed below is for variant (1) encodes the longest isoform.
Protein Families:	Druggable Genome

[View online »](#)

Product images:



WB analysis using Anti-p28 ING5 antibody to detect over expressed Human ING5 present in HeLa cell nuclear extracts. This WB shows reactivity with purified recombinant TAP tagged human ING5 protein (lane 3) and does not recognize TAP tagged ING4 on the same membrane (lane 2). A mock purification in lane 1. The blot was incubated with a 1:500 dilution of the antibody at RT.



WB analysis using Anti-p28 ING5 antibody to detect over expressed Human ING5 present in cell extracts. Comparison to a molecular weight marker (not shown) indicates a single band of ~36 kDa corresponding to the expected molecular weight for the recombinant protein. Approximately 10 ug of lysate was separated on a 4-20% Tris-Glycine gel by SDS-PAGE and transferred onto nitrocellulose. After blocking the membrane was probed with the primary antibody diluted to 1:1, 500.