

Product datasheet for **TA319221**

IL33 Rabbit Polyclonal Antibody

Product data:

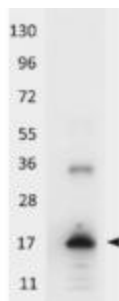
Product Type:	Primary Antibodies
Applications:	WB
Recommended Dilution:	ELISA: 1:10,000 - 1:50,000, WB: 1:1,000 - 1:5,000, IHC: 1:500 - 1:2,500
Reactivity:	Human
Host:	Rabbit
Isotype:	IgG
Clonality:	Polyclonal
Immunogen:	This purified antibody was prepared from whole rabbit serum produced by repeated immunizations with full length recombinant human IL-33 protein.
Formulation:	0.02 M Potassium Phosphate, 0.15 M Sodium Chloride, pH 7.2
Concentration:	lot specific
Conjugation:	Peroxidase
Storage:	Store at -20°C as received.
Stability:	Stable for 12 months from date of receipt.
Gene Name:	interleukin 33
Database Link:	NP_001186569 Entrez Gene 90865 Human O95760
Synonyms:	C9orf26; DVS27; IL1F11; NF-HEV; NFEHEV
Note:	IL-33 (also known as Interleukin-33, Interleukin-1 family member 11, IL-1F11, nuclear factor from high endothelial venules and NF-HEV) is a cytokine that binds to and signals through IL1RL1/ST2 and its stimulation recruits MYD88, IRAK1, IRAK4, and TRAF6, followed by phosphorylation of MAPK3/ERK1 and/or MAPK1/ERK2, MAPK14, and MAPK8. IL-33 induces T helper type 2-associated cytokines. IL-33 is a secreted cytokine that is expressed at high levels in high endothelial venules found in tonsils, Peyer patches and mesenteric lymph nodes and is almost undetectable in placenta. The 31 kDa precursor is proteolytically converted to an 18 kDa mature form by CASP1.
Protein Families:	Secreted Protein



[View online »](#)

Protein Pathways: Cytosolic DNA-sensing pathway

Product images:



Western blot using HRP conjugated anti-Human IL-33 antibody shows detection of a band ~18 kDa in size corresponding to recombinant human IL-33. The identity of the higher molecular weight band is unknown. Molecular weight markers are shown (left). After transfer, the membrane was blocked with 3% BSA in TBS followed by reaction with antibody at a 1:5,000 dilution for 30 min at room temperature. Detection occurred using TMB substrate.