

Product datasheet for **TA319219**

Camk2a Rabbit Polyclonal Antibody

Product data:

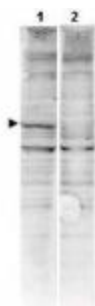
| | |
|-----------------------|---|
| Product Type: | Primary Antibodies |
| Applications: | WB |
| Recommended Dilution: | ELISA: 1:4,000 - 1:20,000, WB: 1:1,000 - 1:3,000 |
| Reactivity: | Human, Mouse, Rat, Dog, Orang-Utan |
| Host: | Rabbit |
| Isotype: | IgG |
| Clonality: | Polyclonal |
| Immunogen: | This affinity purified antibody was prepared from whole rabbit serum produced by repeated immunizations with a synthetic peptide corresponding to amino acids 6-23 of Human CaM Kinase II protein. |
| Formulation: | 0.02 M Potassium Phosphate, 0.15 M Sodium Chloride, pH 7.2 |
| Concentration: | lot specific |
| Conjugation: | Unconjugated |
| Storage: | Store at -20°C as received. |
| Stability: | Stable for 12 months from date of receipt. |
| Gene Name: | calcium/calmodulin-dependent protein kinase II alpha |
| Database Link: | NP_037052 Entrez Gene 815 Human Entrez Gene 12322 Mouse Entrez Gene 612941 Dog Entrez Gene 25400 Rat P11275 |
| Synonyms: | CAMKA; CaMKIINalpha; KIAA0968 |



[View online »](#)

Note: CaM Kinase II (also known as CAMK2 and calcium/calmodulin-dependent protein kinase type II alpha chain) is a prominent kinase in the central nervous system that may function in the long-term potentiation of neurotransmitter release. CaM Kinase II autophosphorylates itself at Thr-286 which allows the kinase to switch from a calmodulin-dependent to a calmodulin-independent state. CaM Kinase II is composed of four different chains: alpha, beta, gamma, and delta. The different isoforms assemble into homo- or heteromultimeric holoenzymes composed of 8 to 12 subunits. This kinase is expressed in brain tissue. Alternative splicing occurs for this gene product.

Product images:



WB using Anti-CaM Kinase II antibody shows detection of a band ~54 kDa corresponding to human alpha CaM Kinase II (arrowhead lane 1). Specific reactivity with this band is blocked when the antibody is pre-incubated with the immunizing peptide (lane 2). The primary antibody diluted to 1:1, 500 for 2h at RT followed by washes and reaction with a 1:10,000 dilution of IRDye™800 conjugated Gt-a-Rabbit IgG [H&L] MX for 45 min at room temperature.