

Product datasheet for **TA319208**

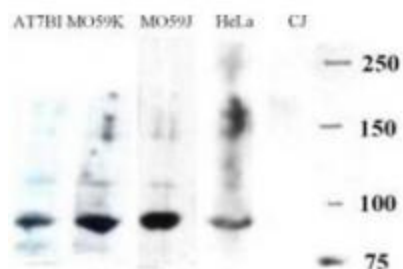
Artemis (DCLRE1C) Goat Polyclonal Antibody

Product data:

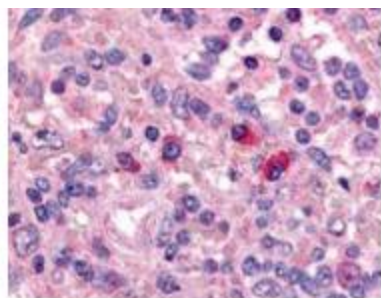
| | |
|-----------------------|--|
| Product Type: | Primary Antibodies |
| Applications: | IHC, WB |
| Recommended Dilution: | ELISA: 1:10,000 - 1:20,000, WB: 1:500 - 1:2,000, IHC: 1:1,000 |
| Reactivity: | Human |
| Host: | Goat |
| Clonality: | Polyclonal |
| Immunogen: | This affinity purified antibody was prepared from whole goat serum produced by repeated immunizations with a synthetic peptide corresponding aa 482-495 of Human ARTEMIS (DCLRE1C DNA cross-link repair 1C). |
| Formulation: | 0.02 M Potassium Phosphate, 0.15 M Sodium Chloride, pH 7.2 |
| Concentration: | lot specific |
| Conjugation: | Unconjugated |
| Storage: | Store at -20°C as received. |
| Stability: | Stable for 12 months from date of receipt. |
| Gene Name: | DNA cross-link repair 1C |
| Database Link: | NP_001029027 Entrez Gene 64421 Human Q96SD1 |
| Synonyms: | A-SCID; DCLREC1C; RS-SCID; SCIDA; SNM1C |
| Note: | Artemis has a role in T and B lymphocyte immunodeficiency and in predisposition to lymphoma through the NHEJ pathway of DNA repair. DNA-PKcs regulates Artemis by both phosphorylation and complex formation to permit enzymatic activities that are critical for the hairpin-opening step of V(D)J recombination and for the 5' and 3' overhang processing in non-homologous DNA end joining. |
| Protein Families: | Druggable Genome |
| Protein Pathways: | Cell cycle, Non-homologous end-joining, Primary immunodeficiency |



[View online »](#)

Product images:

Western blotting. Goat-anti-Artemis was used at a 1:500 dilution to detect Artemis in various cell lysates by Western blot. CJ is an Artemis deficient cell line and so no band is visible.



Affinity Purified anti-Artemis antibody was used at a 1:1000 dilution to detect Artemis by immunohistochemistry in human spleen. Positive staining of T cells and B lymphocytes is observed in thymus, lymph nodes and spleen. Tissue was formalin-fixed and paraffin embedded. Personal Communication, Alan Yen, LifeSpanBiosciences, Seattle, WA.