

Product datasheet for **TA319183**

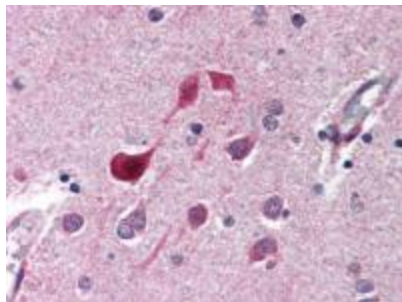
CDK5 Rabbit Polyclonal Antibody

Product data:

Product Type:	Primary Antibodies
Applications:	IHC
Recommended Dilution:	ELISA: 1:5,000 - 1:20,000, WB: 1:500 - 1:5,000, IP: 1:100
Reactivity:	Human, Mouse, Rat
Host:	Rabbit
Isotype:	IgG
Clonality:	Polyclonal
Immunogen:	cdk5 (p31) peptide corresponding to the C-terminus of the human protein conjugated to Keyhole Limpet Hemocyanin (KLH).
Formulation:	None
Concentration:	lot specific
Conjugation:	Unconjugated
Storage:	Store at -20°C as received.
Stability:	Stable for 12 months from date of receipt.
Gene Name:	cyclin-dependent kinase 5
Database Link:	NP_001157882 Entrez Gene 12568 MouseEntrez Gene 140908 RatEntrez Gene 1020 Human Q00535
Synonyms:	PSSALRE
Note:	The protein encoded by the gene CDK5 is involved in the control of the cell cycle and interacts with D1 and D3-type G1 cyclins. CDK5 belongs to the protein kinase superfamily, the CMGC Ser/Thr protein kinase family and the CDC2/CDKX subfamily. CDK5 phosphorylates histone H1, tau, MAP2 and NF-H and NF-M and also interacts with p35 which activates the kinase. CDK5 forms a heterodimer, where CDK5 is the catalytic subunit and p35 is the regulatory subunit. CDK5 is also found in a trimolecular complex with CABLES1 and ABL1. CDK5 is a cytoplasmic protein.
Protein Families:	Druggable Genome, Protein Kinase
Protein Pathways:	Alzheimer's disease, Axon guidance



[View online »](#)

Product images:

anti-CDK5 antibody was diluted 1:500 to detect CDK5 in human brain cortex tissue. Tissue was formalin fixed and paraffin embedded. No pre-treatment of sample was required. The image shows the localization of antibody as the precipitated red signal, with a hematoxylin purple nuclear counter stain.