

Product datasheet for **TA319176**

FANCG Rabbit Polyclonal Antibody

Product data:

Product Type:	Primary Antibodies
Applications:	IHC, WB
Recommended Dilution:	ELISA: 1:10,000 - 1:50,000, WB: 1:500 - 1:2,000, IHC: 1:500 - 1:2,000
Reactivity:	Human, Chimpanzee
Host:	Rabbit
Isotype:	IgG
Clonality:	Polyclonal
Immunogen:	This affinity purified antibody was prepared from whole rabbit serum produced by repeated immunizations with a synthetic peptide corresponding to amino acids 1-12 of human FANCG protein.
Formulation:	0.02 M Potassium Phosphate, 0.15 M Sodium Chloride, pH 7.2
Concentration:	lot specific
Conjugation:	Unconjugated
Storage:	Store at -20°C as received.
Stability:	Stable for 12 months from date of receipt.
Gene Name:	Fanconi anemia complementation group G
Database Link:	NP_004620 Entrez Gene 2189 Human O15287
Synonyms:	FAG; XRCC9

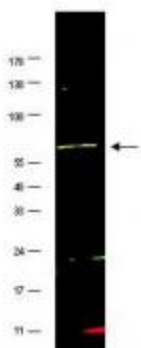


[View online »](#)

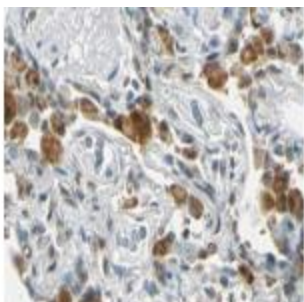
Note: FANCG (also called Protein FANCG or DNA-repair protein XRCC9) is involved in DNA repair, perhaps specifically with post-replication repair or a cell cycle checkpoint function. FANCG may also be implicated in interstrand DNA cross-link repair and in the maintenance of normal chromosome stability. This protein may also function as a tumor suppressor gene. FANCG belongs to the multi-subunit Fanconi Anemia (FA) complex composed of FANCA, FANCB, FANCC, FANCE, FANCF, FANCG, FANCL/PHF9 and FANCM. FANCG contains a 5-prime GC-rich untranslated region characteristic of housekeeping genes. The putative 622-amino acid protein has a leucine-zipper motif at its N-terminus. FANCG is mainly found within the nucleus although some protein is localized in the cytoplasm. This protein is highly expressed in testis and thymus and is also found in lymphoblasts. Fanconi anemia is an

Protein Families: Druggable Genome

Product images:



WB using Anti-FANCG antibody shows detection of a band at ~69 kDa (arrowhead) corresponding to FANCG present in a HeLa whole cell lysate. The primary antibody was used at a 1:500 dilution. Molecular weight estimation was made by comparison to prestained MW markers (indicated at left).



Affinity Purified anti-FANCG antibody shows strong nuclear and cytoplasmic staining of cells of macrophages in human lung tissue. Tissue was formalin-fixed and paraffin embedded. Brown color indicates presence of protein, blue color shows cell nuclei. Personal Communication, Kenneth Wester, www.proteinatlas.org, Uppsala, Sweden.