

Product datasheet for **TA319175**

MCM2 Rabbit Polyclonal Antibody

Product data:

Product Type:	Primary Antibodies
Applications:	WB
Recommended Dilution:	ELISA: 1:10,000 - 1:50,000, WB: 1:500 - 1:2,000
Reactivity:	Human, Mouse, Rat, Saccharomyces cerevisiae
Host:	Rabbit
Isotype:	IgG
Clonality:	Polyclonal
Immunogen:	This affinity purified antibody was prepared from whole rabbit serum produced by repeated immunizations with a synthetic peptide corresponding to amino acids 21-31 of human MCM2 protein (see below).
Formulation:	0.02 M Potassium Phosphate, 0.15 M Sodium Chloride, pH 7.2
Concentration:	lot specific
Conjugation:	Unconjugated
Storage:	Store at -20°C as received.
Stability:	Stable for 12 months from date of receipt.
Gene Name:	minichromosome maintenance complex component 2
Database Link:	NP_004517 Entrez Gene 17216 Mouse Entrez Gene 312538 Rat Entrez Gene 4171 Human P49736
Synonyms:	BM28; CCNL1; cdc19; CDCL1; D3S3194; MITOTIN



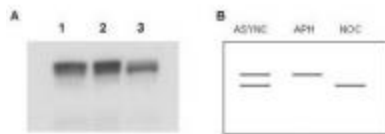
[View online »](#)

Note: This antibody is suitable for Cancer, Immunology and Nuclear Signaling research. MCM2, also called DNA replication licensing factor MCM2, Minichromosome maintenance protein 2 homolog or Nuclear Protein BM28) is one of the highly conserved mini-chromosome maintenance proteins (MCM) that are involved in the initiation of eukaryotic genome replication. The hexameric protein complex formed by MCM proteins is a key component of the pre-replication complex (pre-RC) and may be involved in the formation of replication forks and in the recruitment of other DNA replication related proteins. This protein forms a complex with MCM4, 6, and 7, and has been shown to regulate the helicase activity of the complex. This protein is phosphorylated, and thus regulated by protein kinases CDC2 and CDC7. Double serines at positions 26 and 27 are conserved in rat and mouse. High homology >88% to similar proteins from several other species. Expected broad reactivity to various lysates.

Protein Families: Druggable Genome, Stem cell - Pluripotency, Transcription Factors

Protein Pathways: Cell cycle, DNA replication

Product images:



WB using anti-MCM2 antibody shows detection of both phosphorylated and unphosphorylated MCM2 in nuclear extracts from elutriated human cells (MO59K/K562). Panel A shows WB results for asynchronous cells lysates (lane 1), cells arrested in early S with aphidicolin (Lane 2), and cells arrested in mitosis with nocodazole (lane 3). Panel B shows a schematic diagram of bands representing phosphorylated and unphosphorylated MCM2 present in these preparations. The primary antibody was diluted 1:400.