

Product datasheet for **TA319173**

beta 2 Microglobulin (B2M) Rabbit Polyclonal Antibody

Product data:

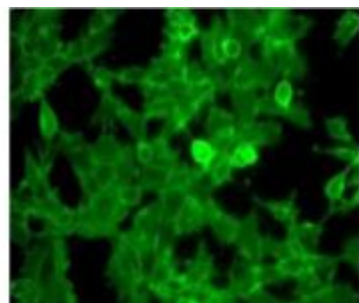
Product Type:	Primary Antibodies
Applications:	IF, IHC
Recommended Dilution:	ELISA: 1:2,000 - 1:10,000, WB: 1:1,000 - 1:5,000, IHC: 1:500 - 1:2,000
Reactivity:	Human
Host:	Rabbit
Isotype:	IgG
Clonality:	Polyclonal
Immunogen:	Anti-Beta-2-Microglobulin Antibody was produced by repeated immunizations with human beta-2-Microglobulin protein isolated from urine.
Formulation:	0.02 M Potassium Phosphate, 0.15 M Sodium Chloride, pH 7.2
Conjugation:	Unconjugated
Storage:	Store at -20°C as received.
Stability:	Stable for 12 months from date of receipt.
Gene Name:	beta-2-microglobulin
Database Link:	NP_004039 Entrez Gene 567 Human P61769
Synonyms:	IMD43
Note:	Anti-beta-2-Microglobulin Antibody detects beta-2-Microglobulin. Beta-2-microglobulin is a component of the class I major histocompatibility complex (MHC), which are present on all nucleated cells (excludes red blood cells). It is involved in the presentation of peptide antigens to the immune system. Beta-2-microglobulin associates not only with the alpha chain of MHC class I molecules, but also with class I-like molecules such as CD1 and Qa. Defects in B2M are the cause of hypercatabolic hypoproteinemia. Anti-beta-2-Microglobulin Antibody is ideal for investigators involved in Cell Signaling, Immunology and Cell Biology research.
Protein Families:	Druggable Genome, Secreted Protein
Protein Pathways:	Antigen processing and presentation



[View online »](#)

Product images:

IHC of Rabbit anti-Beta-2-Microglobulin Antibody. Tissue: normal human skin. Fixation: formalin fixed paraffin embedded. Antigen retrieval: not required. Primary antibody: Left panel: isotype control, Right panel: β 2 microglobulin antibody at 1 μ g/ml for 20 min at RT. Secondary antibody: Peroxidase rabbit secondary antibody at 1:10,000 for 45 min at RT. Localization: β 2 microglobulin is cell membrane (and to lesser amount cytoplasmic compartment).



IF of Rabbit Anti-Beta-2-microglobulin antibody. Tissue: Human Embryonic Kidney cells (HEK 293 cells). Primary antibody: β -2 microglobulin antibody at 1:200 for overnight at 4°C. Secondary antibody: donkey anti-rabbit secondary antibody conjugated with Alexa Fluor 488 fluorochrome at 1:1,000 for 45 min at RT. Localization: β 2-microglobulin is mainly on the cell surface and occasionally cytoplasmic. Staining: Beta-2-microglobulin as green fluorescent signal.