

Product datasheet for **TA319169**

USP7 Rabbit Polyclonal Antibody

Product data:

Product Type:	Primary Antibodies
Applications:	WB
Recommended Dilution:	ELISA: 1:15,000 - 1:60,000, WB: 1:500 - 1:2,000
Reactivity:	Human
Host:	Rabbit
Isotype:	IgG
Clonality:	Polyclonal
Immunogen:	This affinity purified antibody was prepared from whole rabbit serum produced by repeated immunizations with a synthetic peptide corresponding to amino acids near the amino terminus of human HAUSP protein.
Formulation:	0.02 M Potassium Phosphate, 0.15 M Sodium Chloride, pH 7.2
Concentration:	lot specific
Conjugation:	Unconjugated
Storage:	Store at -20°C as received.
Stability:	Stable for 12 months from date of receipt.
Gene Name:	ubiquitin specific peptidase 7 (herpes virus-associated)
Database Link:	NP_003461 Entrez Gene 7874 Human Q93009
Synonyms:	HAUSP; TEF1

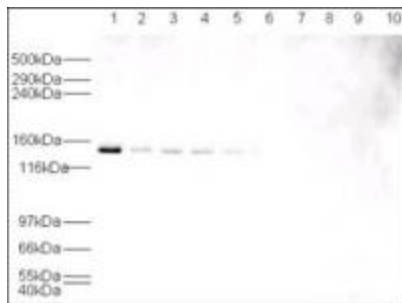


[View online »](#)

Note: HAUSP (also known as deubiquitinating enzyme 7, herpes virus associated ubiquitin specific protease, TEF1, ubiquitin carboxyl terminal hydrolase 7, ubiquitin specific protease 7, ubiquitin thiolesterase 7, and USP7) is a novel p53 interacting protein. HAUSP was identified by mass spectrometry of affinity purified p53 associated factors by Li et al. HAUSP strongly stabilizes p53, even in the presence of excess MDM2, and also induces p53-dependent cell growth repression and apoptosis. HAUSP has an intrinsic enzymatic activity that specifically de-ubiquitinates p53 both in vivo and in vitro. Expression of a catalytically inactive point mutation of HAUSP in cells increased the levels of p53 ubiquitination and also destabilized p53. Li et al concluded that their findings revealed an important mechanism by which p53 can be stabilized by direct de-ubiquitination and also implied that HAUSP may function as a tumor suppressor in vivo through the stabilization of p53.

Protein Families: Druggable Genome, Protease

Product images:



Western blot using affinity purified anti-HAUSP antibody shows detection of HAUSP in various cell lysates at 130 kDa (lane 1 - HeLa nuclear extract, lane 2 - HeLa, Lane 3 - A431, Lane 4 - MCF7, Lane 5 - 3T3). The antibody is blocked by pre-incubation with the immunizing peptide (lanes 6 - 10) using the same lysates. A 1:500 dilution of the primary antibody was used for detection followed by a 1:5,000 dilution of HRP Gt-a-Rabbit IgG. Exposure time was 30 s.