

## Product datasheet for **TA319167**

### STAT6 Rabbit Polyclonal Antibody

#### Product data:

Product Type:	Primary Antibodies
Applications:	IHC, WB
Recommended Dilution:	ELISA: 1:32,000, WB: 1:1000
Reactivity:	Human
Host:	Rabbit
Isotype:	IgG
Clonality:	Polyclonal
Immunogen:	STAT6 phospho Y641 Antibody was prepared from whole rabbit serum produced by repeated immunizations with a synthetic peptide corresponding to residues surrounding Y641 of human STAT6 protein.
Formulation:	0.02 M Potassium Phosphate, 0.15 M Sodium Chloride, pH 7.2
Concentration:	lot specific
Conjugation:	Unconjugated
Storage:	Store at -20°C as received.
Stability:	Stable for 12 months from date of receipt.
Gene Name:	signal transducer and activator of transcription 6
Database Link:	<a href="#">NP_001171549</a> <a href="#">Entrez Gene 6778 Human</a> <a href="#">P42226</a>
Synonyms:	D12S1644; IL-4-STAT; STAT6B; STAT6C



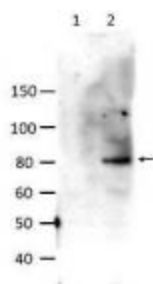
[View online »](#)

**Note:** Anti-STAT6 phospho Y641 Antibody is ideal to study STAT6. STAT6 is a member of the STAT family of transcription factors. In response to cytokines and growth factors, STAT family members are phosphorylated by the receptor associated kinases, and then form homo- or heterodimers that translocate to the cell nucleus where they act as transcription activators. STAT6 is involved in interleukin-4 signaling. It interacts with NCOA1 via its C-terminal LXXLL motif. Further it induces the expression of BCL2L1/BCL-X(L), which is responsible for the anti-apoptotic activity of IL4. Knockout studies in mice suggested the roles of this gene in differentiation of T helper 2 (Th2) cells, expression of cell surface markers, and class switch of immunoglobulins. Following stimulation by IL-4 and IL-3, Stat6 is activated via phosphorylation at Tyr641 and translocates to the nucleus where it regulates cytokine-induced gene expression. STAT6 research areas include Immunology, Signal Transduction and Chromatin & Nuclear Signaling.

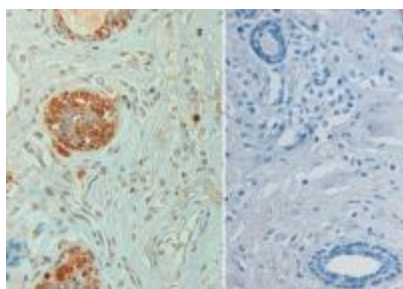
**Protein Families:** Druggable Genome, ES Cell Differentiation/IPS, Stem cell relevant signaling - DSL/Notch pathway, Stem cell relevant signaling - JAK/STAT signaling pathway, Transcription Factors

**Protein Pathways:** Jak-STAT signaling pathway

### Product images:



Western Blot of Rabbit anti-STAT6 pY641 antibody. Lane 1: unstimulated HeLa cell lysate. Lane 2: IL-4 stimulated HeLa cell lysate. Load: 10 ug per lane. Primary antibody: STAT6 pY641 antibody at 1:1000 for overnight at 4°C. Secondary antibody: HRP goat anti-rabbit at 1:40,000 for 30 min at RT. Block: 5% Blotto, 30 min at RT. Predicted/Observed size: 94 kDa, 90 kDa. Other band (s): unspecific bands.



Immunohistochemistry of Rabbit anti STAT6 pY641 Antibody in human breast carcinoma pH 9 (left) with negative control (right) Tissue: Human breast carcinoma