

Product datasheet for **TA319166**

MCP1 (CCL2) Rabbit Polyclonal Antibody

Product data:

Product Type:	Primary Antibodies
Applications:	WB
Recommended Dilution:	ELISA: 1:10,000, WB: 1:1000
Reactivity:	Human
Host:	Rabbit
Isotype:	IgG
Clonality:	Polyclonal
Immunogen:	This IgG fraction antibody was prepared from rabbit antiserum after repeated immunizations with mature length recombinant human MCP-1 protein produced in E.coli.
Formulation:	0.02 M Potassium Phosphate, 0.15 M Sodium Chloride, pH 7.2
Concentration:	lot specific
Conjugation:	Unconjugated
Storage:	Store at -20°C as received.
Stability:	Stable for 12 months from date of receipt.
Gene Name:	C-C motif chemokine ligand 2
Database Link:	NP_002973 Entrez Gene 6347 Human P13500
Synonyms:	GDCF-2; HC11; HSMCR30; MCAF; MCP-1; MCP1; SCYA2; SMC-CF



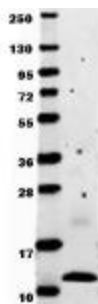
[View online »](#)

Note: MCP-1, or Monocyte chemoattractant protein 1, of the intercrine beta (chemokine CC) family, is a chemotactic factor that attracts monocytes and basophils but not neutrophils or eosinophils. It augments monocyte anti-tumor activity and has been implicated in the pathogenesis of diseases characterized by monocytic infiltrates, like psoriasis, rheumatoid arthritis or atherosclerosis. It may be involved in the recruitment of monocytes into the arterial wall during the disease process of atherosclerosis. MCP-1 exists as a monomer or homodimer; in equilibrium. It binds to CCR2 and CCR4 and is tethered on endothelial cells by glycosaminoglycan (GAG) side chains of proteoglycans. Processing at the N-terminus can regulate receptor and target cell selectivity. Deletion of the N-terminal residue converts it from an activator of basophil to an eosinophil chemoattractant.

Protein Families: Druggable Genome, Secreted Protein

Protein Pathways: Chemokine signaling pathway, Cytokine-cytokine receptor interaction, NOD-like receptor signaling pathway

Product images:



Anti-human MCP-1 by WB shows detection of recombinant human MCP-1 raised in E.coli. Recombinant (0.1 ug, 8.6 kDa) protein was loaded onto and resolved by SDS-PAGE, then transferred to nitrocellulose. The membrane was incubated with Rockland's, Inc. Anti-Human MCP-1. After washing, membrane was probed with secondary antibody Dylight™ 649 Conjugated Anti-Rabbit IgG (H&L) (Goat) Antibody (p/n 611-143-122) diluted 1:20,000.