

Product datasheet for **TA319161**

PDPK1 Rabbit Polyclonal Antibody

Product data:

Product Type:	Primary Antibodies
Applications:	WB
Recommended Dilution:	ELISA: 1:100,000, WB: 1:500 - 1:2,000, IHC: User Optimized
Reactivity:	Human
Host:	Rabbit
Isotype:	IgG
Clonality:	Polyclonal
Immunogen:	This affinity purified antibody was prepared from whole rabbit serum produced by repeated immunizations with a synthetic peptide corresponding to a region near the C-terminal of human PDK-1 protein.
Formulation:	0.02 M Potassium Phosphate, 0.15 M Sodium Chloride, pH 7.2
Concentration:	lot specific
Conjugation:	Unconjugated
Storage:	Store at -20°C as received.
Stability:	Stable for 12 months from date of receipt.
Gene Name:	3-phosphoinositide dependent protein kinase 1
Database Link:	NP_001248745 Entrez Gene 5170 Human O15530
Synonyms:	PDK1; PDPK2; PDPK2P; PRO0461
Note:	PDK-1 (3-Phosphoinositide-Dependant Protein Kinase-1) phosphorylates AGC kinases. PDK-1 activates conventional PKC and PKCz (zeta) through phosphorylation of critical threonine residues in the activation loop. PDK-1 also phosphorylates Protein Kinase B (PKB) at threonine 308 in the presence of phosphatidylinositol-3,4,5-trisphosphate. Active Akt inactivates Glycogen Synthase Kinase-3 (GSK3), eventually leading to the dephosphorylation and activation of glycogen synthase, and the stimulation of glycogen synthesis. Because of the role that PDK1 plays in insulin-induced glycogen synthesis and PKC activation, it is a potentially important target for metabolic drug research.

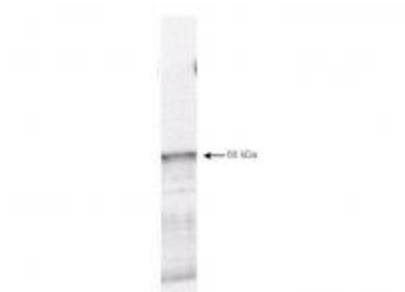


[View online »](#)

Protein Families: Druggable Genome, Protein Kinase

Protein Pathways: Endometrial cancer, Focal adhesion, Insulin signaling pathway, mTOR signaling pathway, Non-small cell lung cancer, PPAR signaling pathway, Prostate cancer

Product images:



Western blot using affinity purified anti-PDK-1 antibody shows detection of myc-tagged human PDK-1 at 60kDa in ~10 ug of a virus infected Sf9 cell lysate (arrow). The nitrocellulose membrane was probed overnight at 4°C with the primary antibody diluted 1:750 in 1% non-fat dry milk. HRP conjugated Goat-anti-Rabbit IgG [H&L] (p/n 611-1302) and chemiluminescent detection is recommended. Other detection systems will yield similar results.