

## Product datasheet for **TA319160**

### **SERPINB2 Rabbit Polyclonal Antibody**

#### **Product data:**

Product Type:	Primary Antibodies
Applications:	WB
Recommended Dilution:	ELISA: 1:100,000 – 150,000, WB: 1:500 – 1:2,000
Reactivity:	Human, Monkey
Host:	Rabbit
Isotype:	IgG
Clonality:	Polyclonal
Immunogen:	This affinity purified antibody was prepared from whole rabbit serum produced by repeated immunizations with a peptide corresponding to an internal area of human PAI-2 protein.
Formulation:	0.02 M Potassium Phosphate, 0.15 M Sodium Chloride, pH 7.2
Concentration:	lot specific
Conjugation:	Unconjugated
Storage:	Store at -20°C as received.
Stability:	Stable for 12 months from date of receipt.
Gene Name:	serpin family B member 2
Database Link:	<a href="#">NP_001137290</a> <a href="#">Entrez Gene 701805 Monkey</a> <a href="#">Entrez Gene 5055 Human</a> <a href="#">P05120</a>
Synonyms:	HsT1201; PAI; PAI-2; PAI2; PLANH2

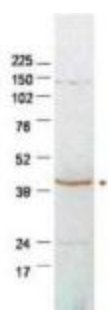


[View online »](#)

**Note:** Extracellular plasminogen activator inhibitor type-2 (also known as PAI-2, Placental plasminogen activator inhibitor; Monocyte Arg-serpin; Urokinase inhibitor; SERPINB2 serpin peptidase inhibitor, clade B (ovalbumin), member 2) is a coagulation factor and a potent inhibitor of urokinase-type plasminogen activator (u-PA) and also acts as a multifunctional protein. It is present in most cells, especially monocytes and macrophages. PAI-2 exists in two forms, a 60-kDa, secreted, extracellular, glycosylated form and a 43-kDa intracellular form. It is a multifunctional protein that plays a role in cell differentiation, in prevention of programmed cell death, in the regulation of cell proliferation, in the inhibition of microbial proteinases and in the protection against stromal degradation. High levels of the PAI-2 protein are associated with a good prognosis in breast cancer, small cell lung, ovarian cancer, and inhibition of metastasis. PAI-2 also plays a role in inflammation on the surface of the eye. PAI-2 may cooperate with pRb2/p130 in modulating PAI-2 gene expression by chromatin remodeling.

**Protein Families:** Druggable Genome, Secreted Protein

### Product images:



WB using Anti-PAI-2 antibody shows detection of endogenous PAI-2 in 50 ug of HeLa whole cell lysates. The band at ~42 kDa (arrowhead) corresponds to PAI-2. Faint non-specific bands are also noted at lower and higher molecular weights positions. Primary antibody was used at 1:500 in 5% BLOTTO in PBS reacted overnight at 4?. The membrane was washed and reacted with a 1:5,000 dilution of HRP- conjugated Gt-a-Rabbit IgG (p/n 611-103-122) for 45 min at RT with ECL used for detection.